


**FLORIDA DEPARTMENT OF ENVIRONMENTAL PROTECTION
CERTIFIED CORNER RECORD**

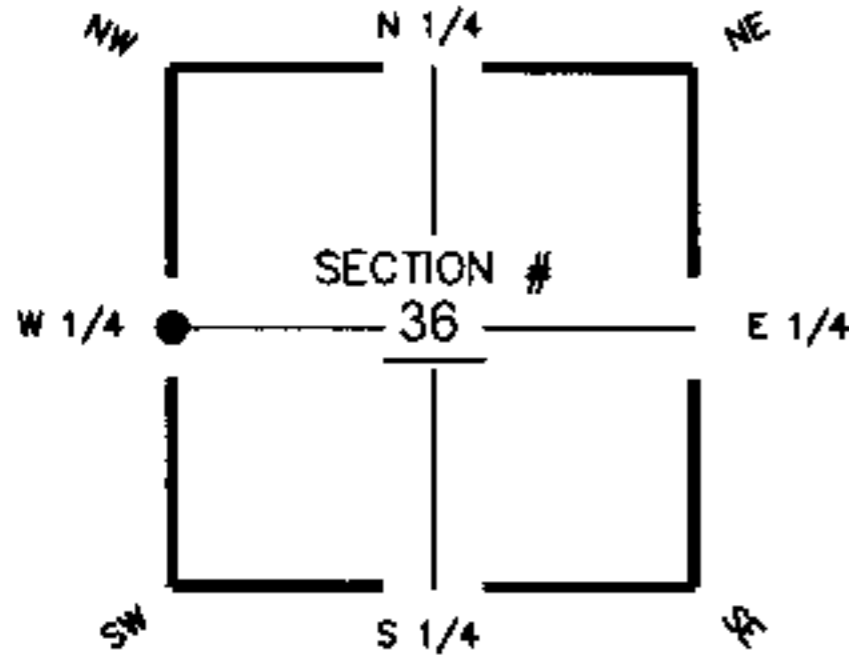
085475

DOC. # _____

CORNER DESCRIPTION: MONUMENTATION DESCRIPTION (EVIDENCE FOUND OR METHOD TO SET)

Depict corner with 

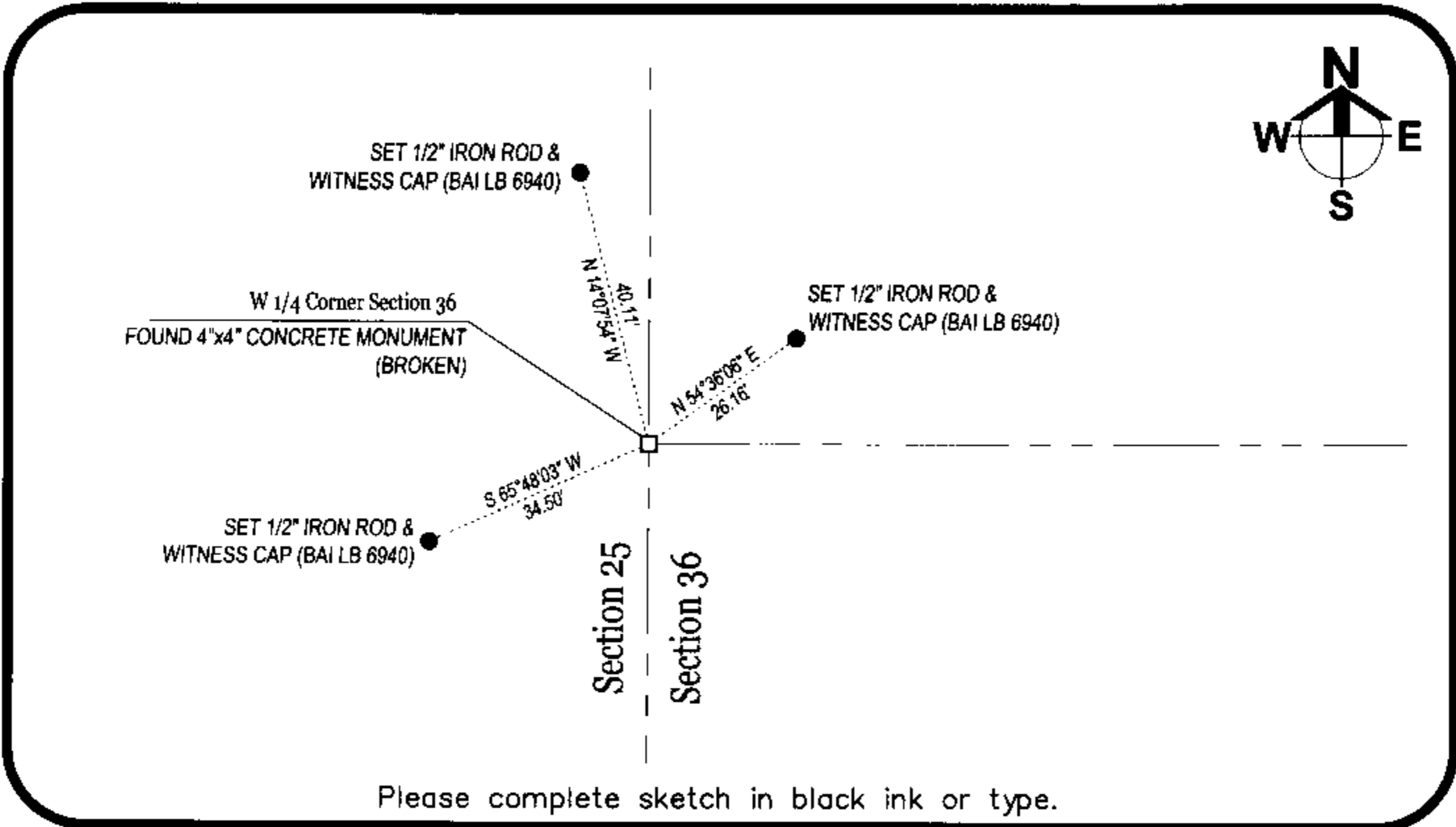
FOUND 4"x4" CONCRETE MONUMENT. WITNESS CORNERS SET.



W 1/4 corner of Section 36
Twp 42S, Rge 25E
Tallahassee Base Meridian,
Charlotte County(s), Florida

HORIZONTAL POSITION INFORMATION (if determined):

Latitude 26°46'37.16314678"N Longitude 81°46'37.28917845"W
 Y(NORTHING-Ft.) 888170.8430 X(EASTING-Ft.) 728914.5555 Zone WEST
 Convergence 0°06'01.6380 Scale factor 0.99994724
 Coordinate determination (circle one): Field traverse GPS NAD83(1999)
 Horizontal datum (circle one): NAD27 NAD83(1986) NAD83(1990) other (explain) _____
 Accuracy (circle one): 1st 2nd 3rd other _____



Please complete sketch in black ink or type.

SURVEYORS CERTIFICATE:

I certify the monument and accessories indicated above were field located on 09-12-2005

Scott A. Barraco
 SIGNATURE _____ 5949
 BARRACO & ASSOCIATES, INC. PSM NO. 6940
 2271 McGregor Boulevard No. 5949 LB NO. _____
 Fort Myers, FL 33902
 (239) 461-3170
 PHONE NUMBER DATE 09-15-2005

EMBOSSSED SEAL OVER SIGNATURE

SEND ORIGINAL TO:
 Department of Environmental Protection
 Bureau of Surveying and Mapping
 3900 Commonwealth Boulevard
 Mail Station 105
 Tallahassee, Florida 32399

D.E.P. USE ONLY

Processed: 10/5/05 MMB
 B.L.M. - I.D. 600140
 QUAD - I.D. 2315 TUCKERSCORNER