

4225Z09

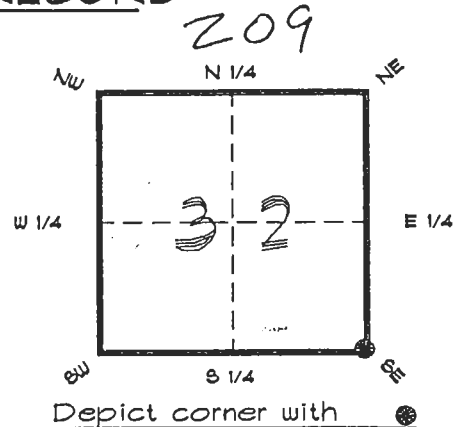
DOC. #

055502

FLORIDA DEPARTMENT OF ENVIRONMENTAL PROTECTION  
CERTIFIED CORNER RECORD

CORNER DESCRIPTION:

S. E. corner of Section 32,  
Twp 42 S., Rge 25 E.,  
Tallahassee Base Meridian,  
CHARLOTTE County(s), Florida.  
LEE



MONUMENTATION DESCRIPTION:

Describe original monument and accessories, or subsequent restoration. Give sources of information. (If no attempt was made to search for the original monument and accessories, this information is not necessary.)

Description of corner evidence found:

CONCRETE MONUMENT STARNES & ASSOC. INC. #2465  
REFER TO CERTIFIED CORNER RECORD DOC. # 14730  
State method(s) to determine corner location (lost corners only):

HORIZONTAL POSITION INFORMATION ( if determined ):

Latitude 26°46'11.28323" N Longitude 81°49'33.38090" W  
Y(Northing) 269910.940 m X(Easting) 217310.429 m Zone FL.W.  
Convergence 0°04'42.234" Scale factor 0.999994487

Coordinate determination (circle one): Field traverse GPS

Horizontal datum (circle one): NAD27 NAD83(1986) NAD83(1990) other (explain)

Order of accuracy as defined in 'Standards and Specifications for Geodetic Control Networks' published by the Federal Geodetic Control Committee (circle one):

1st, 2nd, 3rd, class 1

or Minimum Technical Standards (Chapter 21HH-6, F.A.C.) ratio of closure for field data (example 1:10,000), . This does not specify an order of accuracy.

Control point(s) used for survey: CHARLOTTE COUNTY HORIZONTAL CONTROL NETWORK  
INCLUDES HAYOLINE 2, PLACIDA 2, W260, PUNTPORT, & FLGPS 58 AS B ORDER STATIONS.

Comments:

RECEIVED

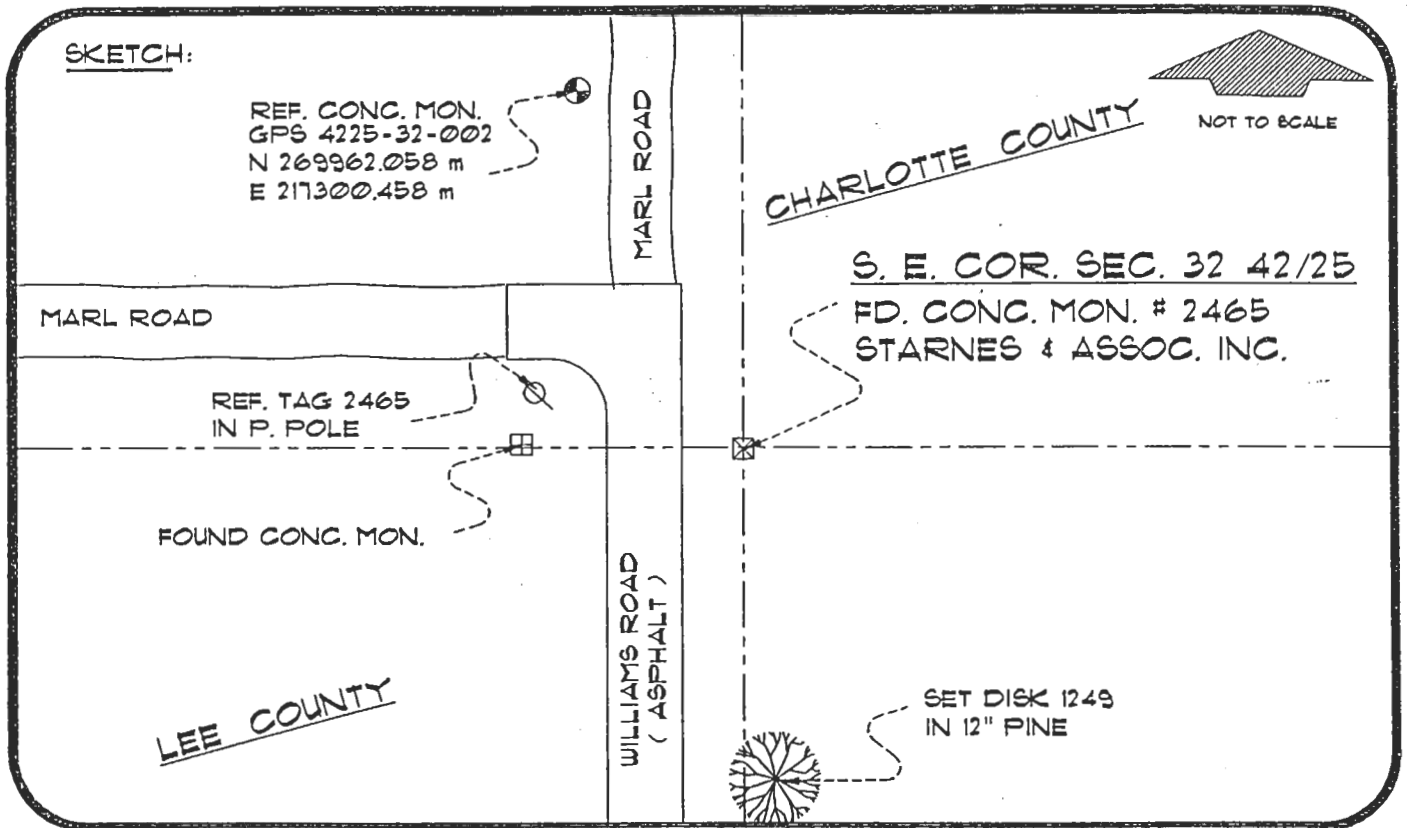
FEB 27 1995

SURVEY & MAPPING

4225Z09

DOC. #

055502



BASIS OF BEARING SOLAR OBSERVATION

REFER: FB 317/07

REFERENCE MEASUREMENTS

Description	Bearing	Distance
REF. TAG 2465 IN P. POLE	N 83°13'22"W	49.95'
FOUND CONC. MON.	N 89°48'57" W	49.95'
SET DISK 1249 IN 12' PINE	S 02°05'08" E	180.42'
GPS 4225-32-002	N 10°57'32" W	170.88'
	( N 11°02'14" W GRID )	

SURVEYORS CERTIFICATE: I certify the monument and accessories indicated above were field located on NOVEMBER 14, 1995

R. Rose PLS 4260  
SIGNATURE

November 15, 1995  
DATE

CHARLOTTE COUNTY SURVEY DEPT.  
FIRM OR AGENCY

1000 FLORIDA STREET  
ADDRESS

PUNTA GORDA, FLA. 33950  
CITY STATE

471



Completeness checked by: B. [Signature]

Accepted and filed: 3-1-96 Date

BLM. - ID. 05323304 D.E.P. USE ONLY

**SEND TO:**

Department of Environmental Protection  
Bureau of Survey and Mapping  
3900 Commonwealth Boulevard  
Mail Station 105  
Tallahassee, Florida 32399