

FLORIDA DEPARTMENT OF ENVIRONMENTAL PROTECTION CERTIFIED CORNER RECORD

084860

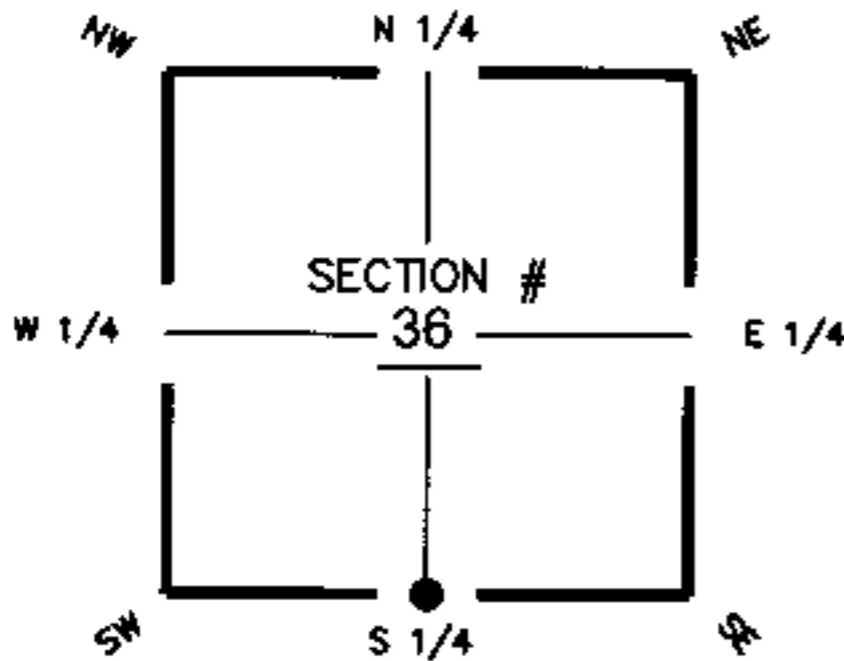
DOC. # _____

CORNER DESCRIPTION:

MONUMENTATION DESCRIPTION (EVIDENCE FOUND OR METHOD TO SET)

Depict corner with ●

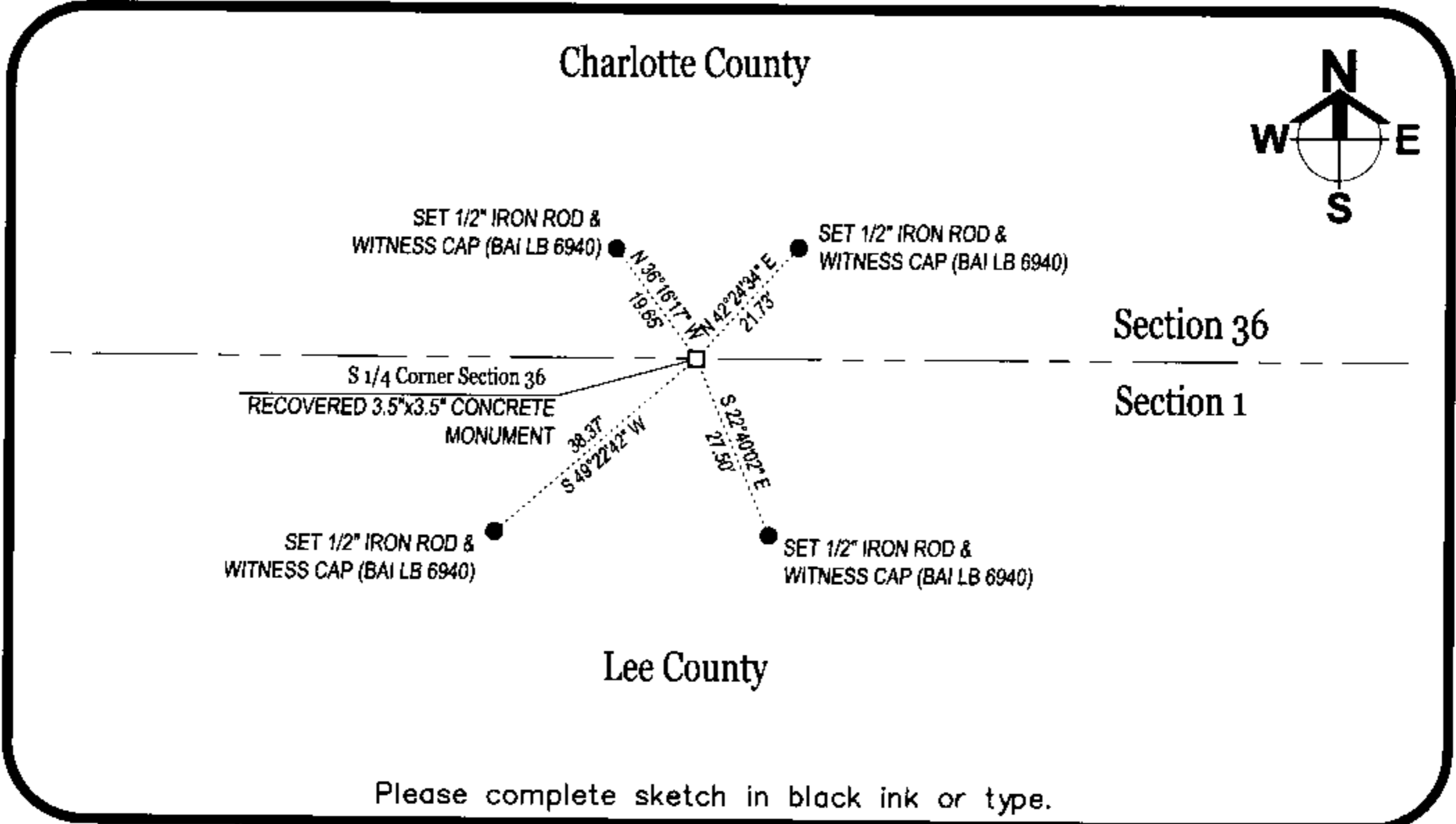
RECOVERED 3.5"x3.5" CONCRETE MONUMENT FROM CERTIFIED CORNER RECORD (DOC. # 36570). NEW WITNESS CORNERS SET.



S 1/4 corner of Section 36
Twp 42S Rge 25E
Tallahassee Base Meridian,
Charlotte County(s), Florida

HORIZONTAL POSITION INFORMATION (if determined):

Latitude 26°46'10.65853405"N Longitude 81°46'08.05274161"W
 Y(NORTHING-Ft.) 885499.3685 X(EASTING-Ft.) 731569.0593 Zone WEST
 Convergence 0°06'14.7143" Scale factor 0.99994769
 Coordinate determination (circle one): Field traverse GPS NAD83(1999)
 Horizontal datum (circle one): NAD27 NAD83(1986) NAD83(1990) other (explain) _____
 Accuracy (circle one): 1st 2nd 3rd other _____



Please complete sketch in black ink or type.

SURVEYORS CERTIFICATE:

I certify the monument and accessories indicated above were field located on 06-02-2005

[Signature] 5949
 Barraco & Associates PSM NO. 6940
 2271 McGregor Boulevard LB NO. _____
 Fort Myers FL 33901
 (239) 461-3170 PHONE NUMBER
 07-05-2005 DATE

SEND ORIGINAL TO:
 Department of Environmental Protection
 Bureau of Surveying and Mapping
 3900 Commonwealth Boulevard
 Mail Station 105
 Tallahassee, Florida 32399

Processed: 7-27-05 D.E.P. USE ONLY S.M.
 B.L.M. - I.D. 6040100
 QUAD - I.D. 2315 Tuckers Corner

EMBOSSSED SEAL OVER SIGNATURE