

4225Z25

DOC. #

055503

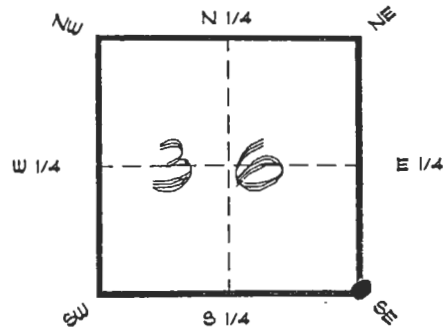
FLORIDA DEPARTMENT OF ENVIRONMENTAL PROTECTION
CERTIFIED CORNER RECORD

225

CORNER DESCRIPTION:

S. E. corner of Section 36,
Twp 42 S., Rge 25 E.,
Tallahassee Base Meridian,

CHARLOTTE County(s), Florida.
LEE



Depict corner with

MONUMENTATION DESCRIPTION:

Describe original monument and accessories, or subsequent restoration. Give sources of information. (If no attempt was made to search for the original monument and accessories, this information is not necessary.)

Description of corner evidence found:

1/2" IRON AXLE ROD IN C/L S.R. 31, 0.4' BELOW ASPHALT SURFACE.

State method(s) to determine corner location (lost corners only):

HORIZONTAL POSITION INFORMATION (if determined):

Latitude 26°46'10.55909" N Longitude 81°45'38.71823" W
Y(Northing) 269899.185 m X(Easting) 223793.075 m Zone FL. W.
Convergence 0°06'27.926" Scale factor 0.99994816

Coordinate determination (circle one): Field traverse GPS

Horizontal datum (circle one): NAD21 NAD83(1986) NAD83(1990) other (explain)

Order of accuracy as defined in "Standards and Specifications for Geodetic Control Networks" published by the Federal Geodetic Control Committee (circle one):
1st, 2nd, 3rd class

or Minimum Technical Standards (Chapter 21HH-6, F.A.C.) ratio of closure for field data (example 1:10,000), _____ . This does not specify an order of accuracy.

Control point(s) used for survey: CHARLOTTE COUNTY HORIZONTAL CONTROL NETWORK INCLUDES HAVOLINE 2, PLACIDA 2, W260, PUNTPORT, 4 FLGPS 58 AS B ORDER STATIONS.

Comments:

RECEIVED

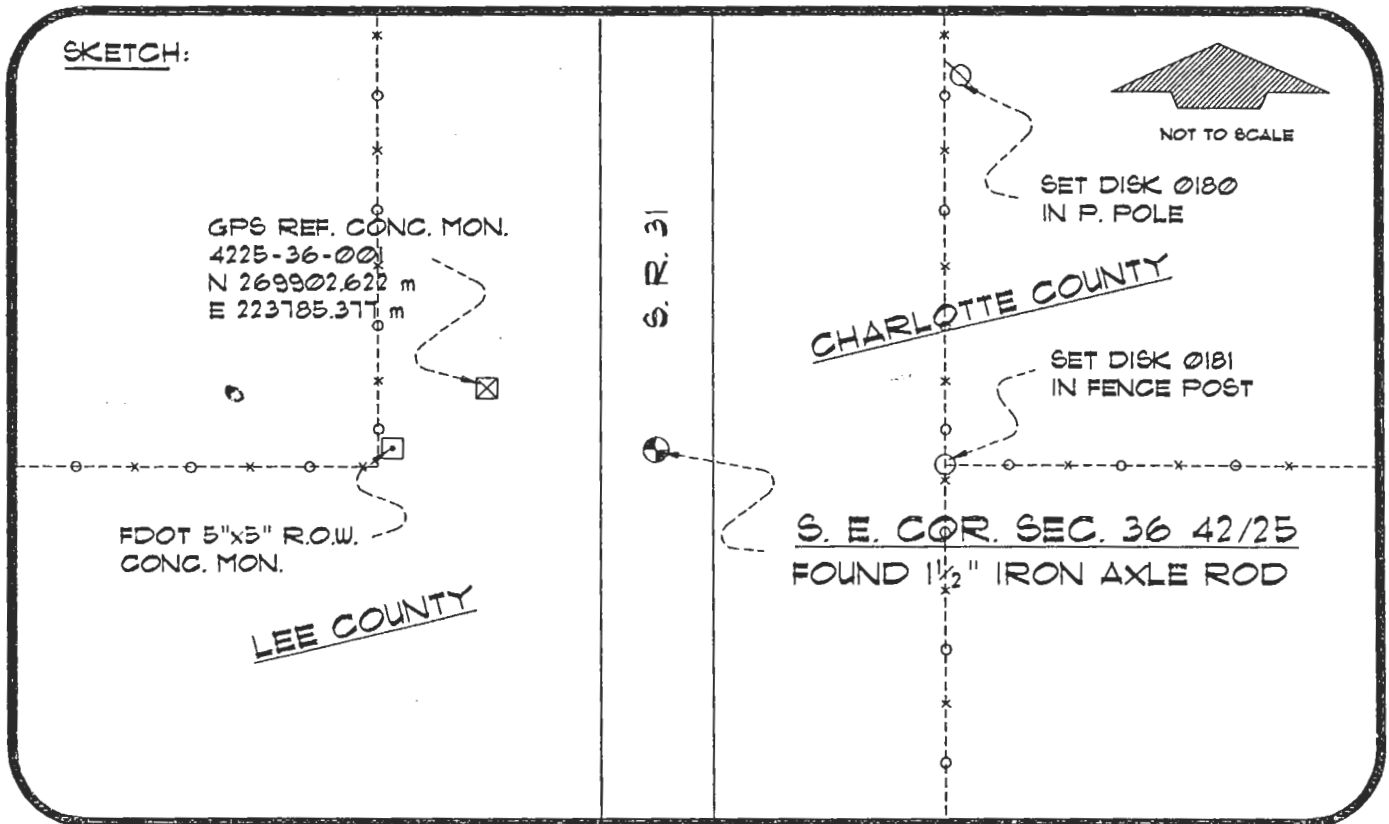
FEB 27 1995

SURVEY & MAPPING

4225Z25

DOC. #

055503



REFERENCE MEASUREMENTS

Description	Bearing	Distance
SET DISK 0180 IN P. POLE	N 37°55'44" E	115.18'
SET DISK 0181 IN FENCE POST	S 84°35'53" E	47.20'
FDOT 5"x5" R.O.W. CONC. MON.	S 88°53'45" W	50.09'
GPS REF. MON. 4225-36-001	N 65°49'51" W	27.66'

SURVEYORS CERTIFICATE: I certify the monument and accessories indicated above were field located on NOVEMBER 22, 1995

R. Rose

PLS 4260

SIGNATURE

NOVEMBER 29, 1995

DATE

CHARLOTTE COUNTY SURVEY DEPT.

FIRM OR AGENCY

1000 FLORIDA STREET

ADDRESS

PUNTA GORDA, FLA. 33950

CITY

STATE

Completeness checked by: *[Signature]*
 Accepted and filed: 3-1-96 Date
 BLM. - ID. 01363106 D.E.P. USE ONLY

471



SEND TO:

Department of Environmental Protection
Bureau of Survey and Mapping
3900 Commonwealth Boulevard
Mail Station 105
Tallahassee, Florida 32399