

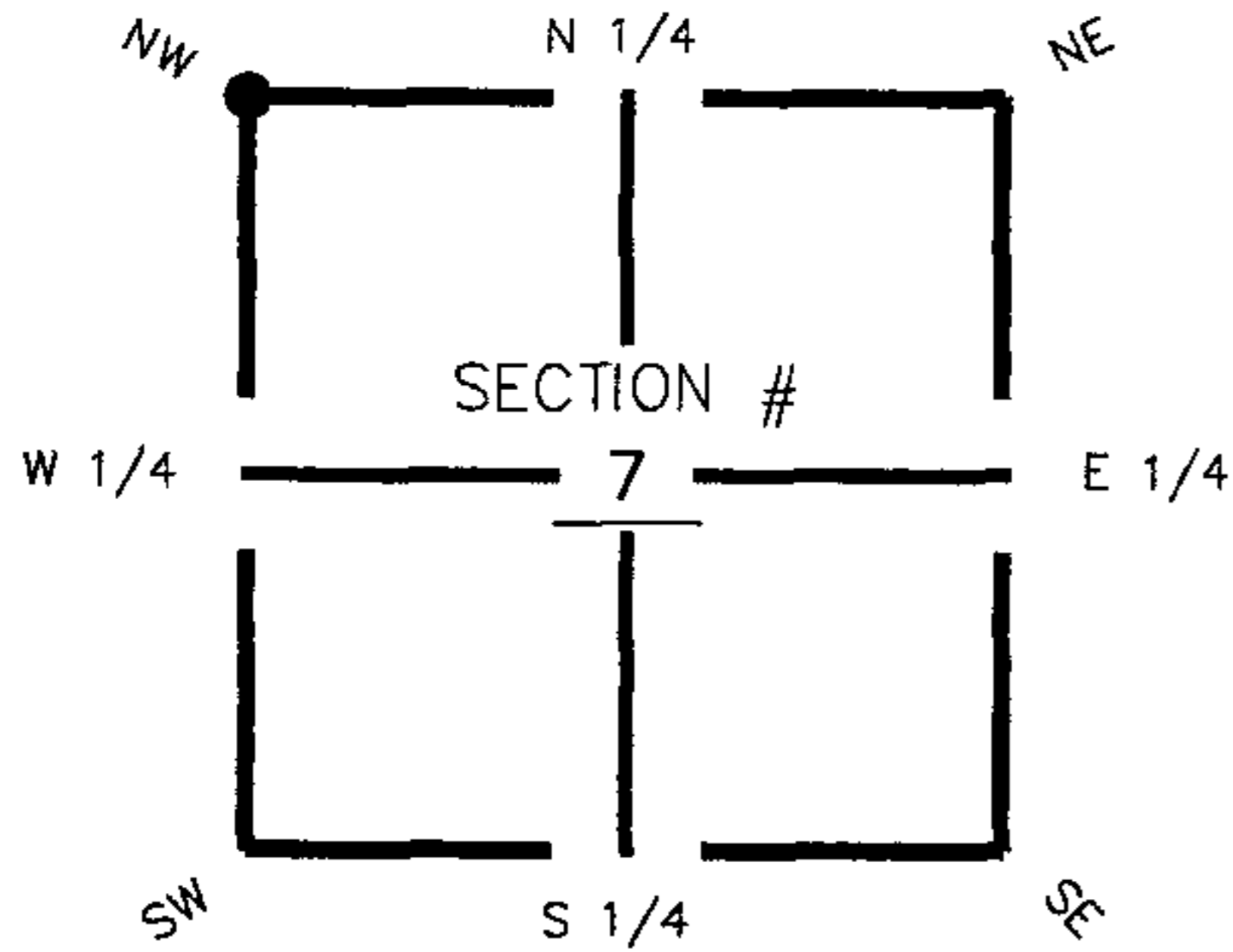
FLORIDA DEPARTMENT OF ENVIRONMENTAL PROTECTION

CERTIFIED CORNER RECORD

DOC. # 089361

CORNER DESCRIPTION: **MONUMENTATION DESCRIPTION (EVIDENCE FOUND OR METHOD TO SET)**

Depict corner with E-1

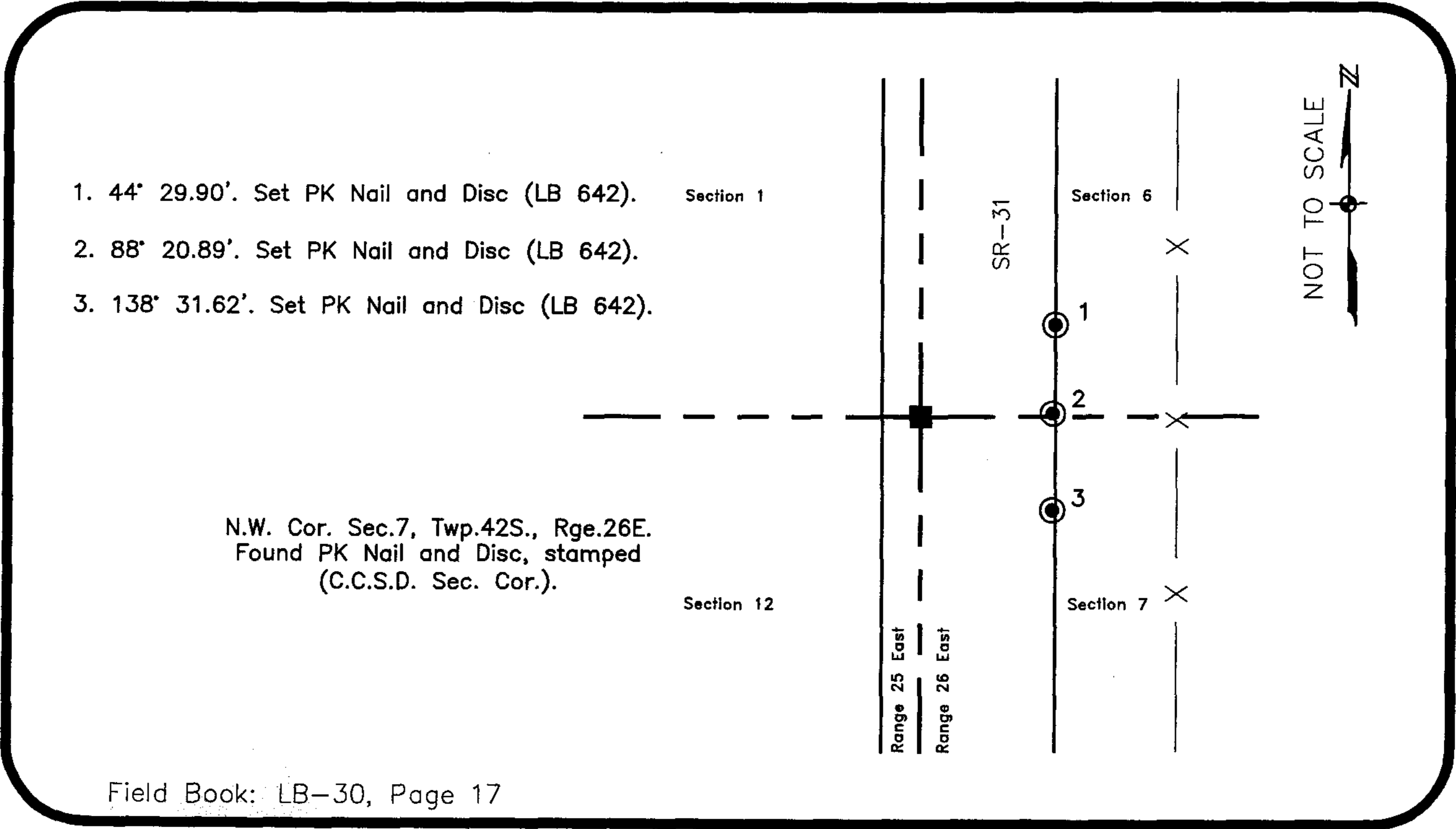


Found PK Nail and Disc, stamped
(C.C.S.D. Sec. Cor.)

HORIZONTAL POSITION INFORMATION (if determined):

Latitude 26° 50' 34.65750" N Longitude 81° 45' 35.38593" W
 Y(NORTHING-Ft.) 912161.30 X(EASTING-Ft.) 734479.39 Zone FL83-WF
 Convergence 0° 06' 30.41546" Scale factor 0.999948208
 Coordinate determination (circle one): Field traverse (GPS)
 Horizontal datum (circle one): NAD27 NAD83(1986) (NAD83(1999)) other (explain)
 Accuracy (circle one): 1st (2nd) 3rd other _____

NW corner of Section 7
 Twp 42 South , Rge 26 East
 Tallahassee Base Meridian,
Charlotte County(s), Florida



Field Book: LB-30, Page 17

SURVEYORS CERTIFICATE:

I certify the monument and accessories indicated above were field located on August 18, 2005

[Signature]
 SIGNATURE
Johnson Engineering, Inc.
 FIRM OR AGENCY
251 West Hickpochee (SR80)
 ADDRESS
La Belle Florida 33935
 CITY STATE ZIP
(863) 612-0594 November 4, 2005
 PHONE NUMBER DATE

4912
 PSM NO.
642
 LB NO.

SEND ORIGINAL TO:
 Department of Environmental Protection
 Bureau of Surveying and Mapping
 3900 Commonwealth Boulevard
 Mail Station 105
 Tallahassee, Florida 32399

D.E.P. USE ONLY

Processed: 11-13-06 MB

B.L.M. - I.D. 100600

QUAD - I.D. 2315 TUCKERS CORNER

EMBOSSSED SEAL OVER SIGNATURE