

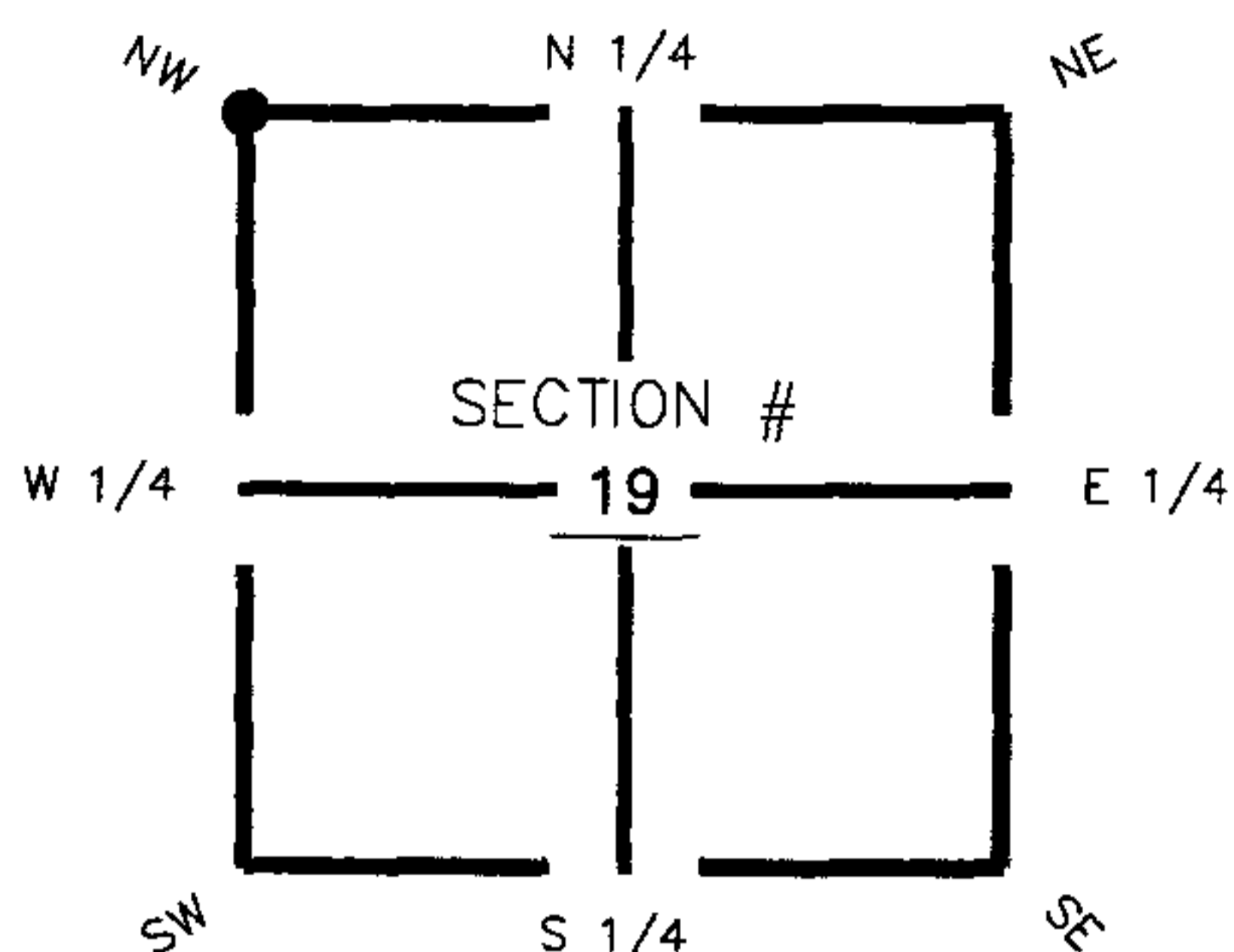
FLORIDA DEPARTMENT OF ENVIRONMENTAL PROTECTION CERTIFIED CORNER RECORD

089363

DOC. # _____

CORNER DESCRIPTION: **MONUMENTATION DESCRIPTION (EVIDENCE FOUND OR METHOD TO SET)**

Depict corner with N-1



Found 2" Aluminum Disc
(Starnes and Associates)

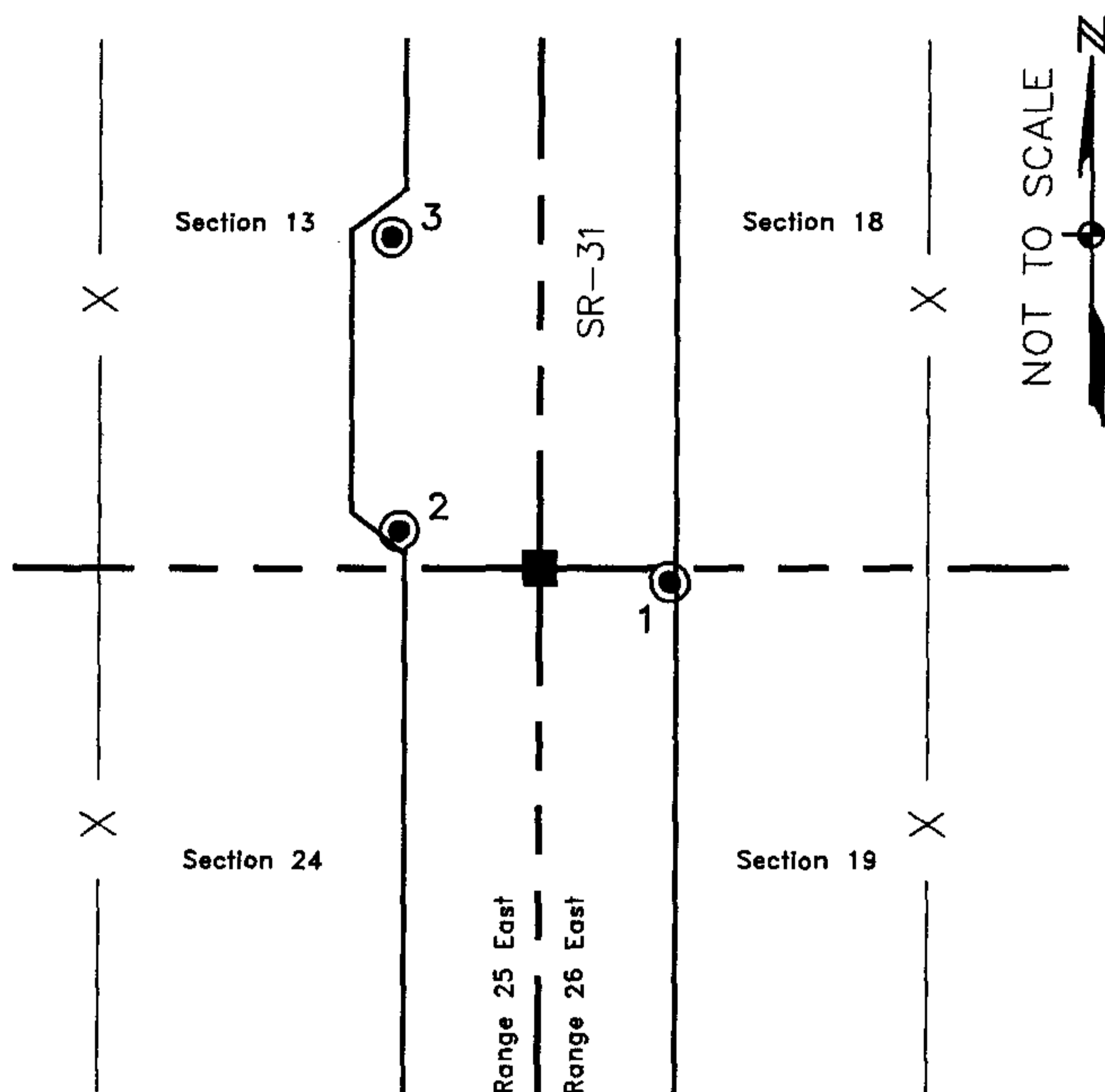
NW corner of Section 19
Twp. 42 South , Rge 26 East
Tallahassee Base Meridian,
Charlotte County(s), Florida

HORIZONTAL POSITION INFORMATION (if determined):

Latitude 26° 48' 48.42397" N Longitude 81° 45' 36.77195" W
Y(NORTHING-Ft.) 901434.44 X(EASTING-Ft.) 734374.11 Zone FL83-WF
Convergence 0° 06' 29.39286" Scale factor 0.999948189
Coordinate determination (circle one): Field traverse GPS
Horizontal datum (circle one): NAD27 NAD83(1986) NAD83(1999) other (explain)
Accuracy (circle one): 1st 2nd 3rd other _____

1. 93° 11.73' Set PK Nail and Disc (LB 642).
2. 271° 12.28' Set PK Nail and Disc (LB 642).
3. 345° 47.51' Set PK Nail and Disc (LB 642).

N.W. Cor. Sec.19, Twp.42S., Rge.26E.
Found 2" Aluminum Disc (Starnes and Associates).



Field Book: LB-30, Page 15

SURVEYORS CERTIFICATE:

I certify the monument and accessories indicated above were field located on August 18, 2005

[Signature]
SIGNATURE _____ 4912
JOHNSON ENGINEERING, INC. PSM NO. 642
FIRM OR AGENCY _____ LB NO. _____
251 West Hickpochee (SR80) ADDRESS _____
La Belle Florida 33935
CITY STATE ZIP
(863) 612-0594 PHONE NUMBER
November 4, 2005 DATE

SEND ORIGINAL TO:
Department of Environmental Protection
Bureau of Surveying and Mapping
3900 Commonwealth Boulevard
Mail Station 105
Tallahassee, Florida 32399

D.E.P. USE ONLY

Processed: 11-13-06 YMB
B.L.M. - I.D. 100400
QUAD - I.D. 2315 Tuckers Corner

EMBOSSSED SEAL OVER SIGNATURE