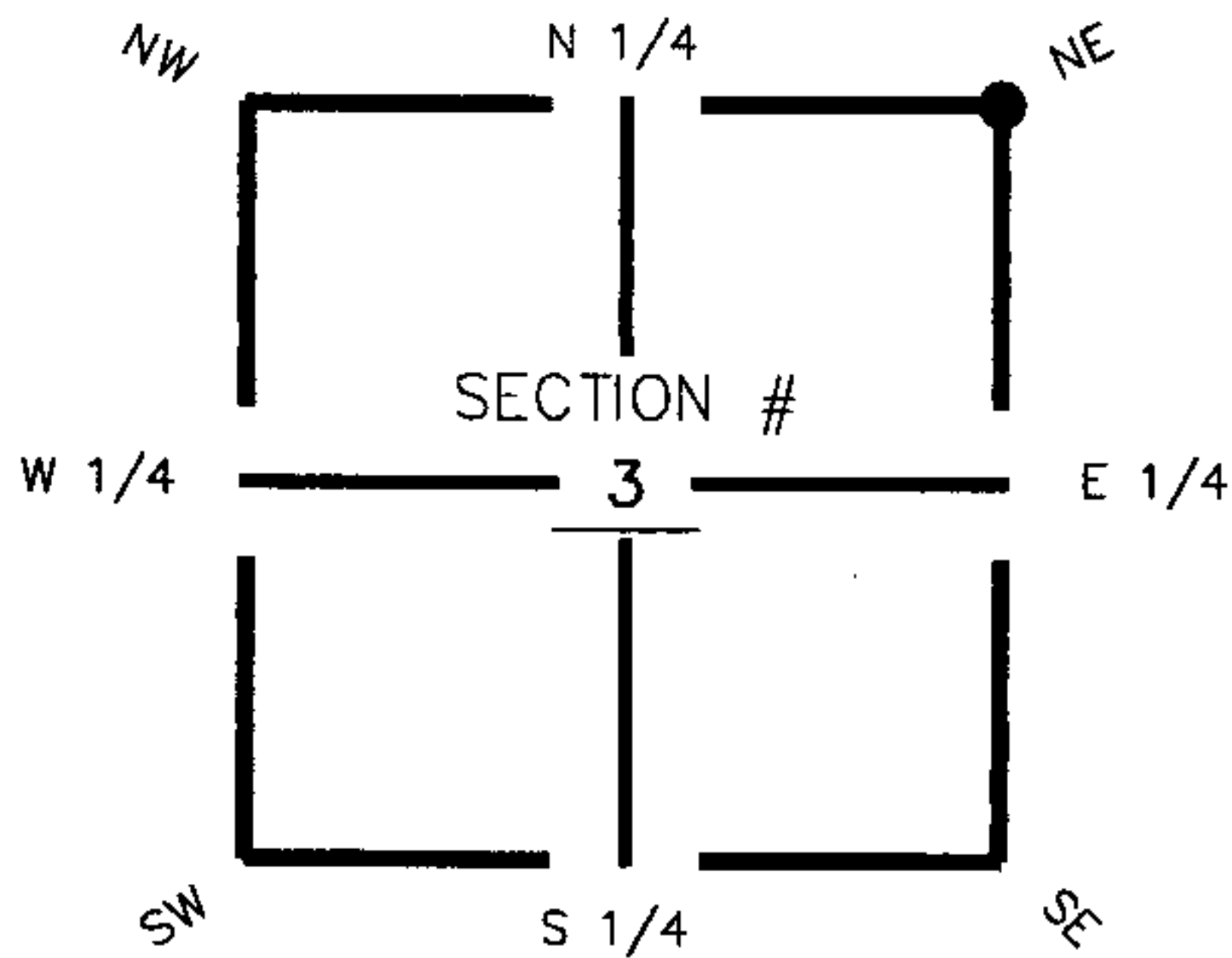


FLORIDA DEPARTMENT OF ENVIRONMENTAL PROTECTION CERTIFIED CORNER RECORD

DOC. # 089369

CORNER DESCRIPTION: MONUMENTATION DESCRIPTION (EVIDENCE FOUND OR METHOD TO SET)

Depict corner with ● A-17



Set $\frac{3}{4}$ " Iron Pipe & Cap
(LB 642)

HORIZONTAL POSITION INFORMATION (if determined):

Latitude 26° 51' 24.85458" N Longitude 81° 35' 50.15508" W

Y(NORTHING-Ft.) 917364.16 X(EASTING-Ft.) 787471.20 Zone FL83-WF

Convergence 0° 10' 54.99618" Scale factor 0.999960943

Coordinate determination (circle one): Field traverse (GPS)

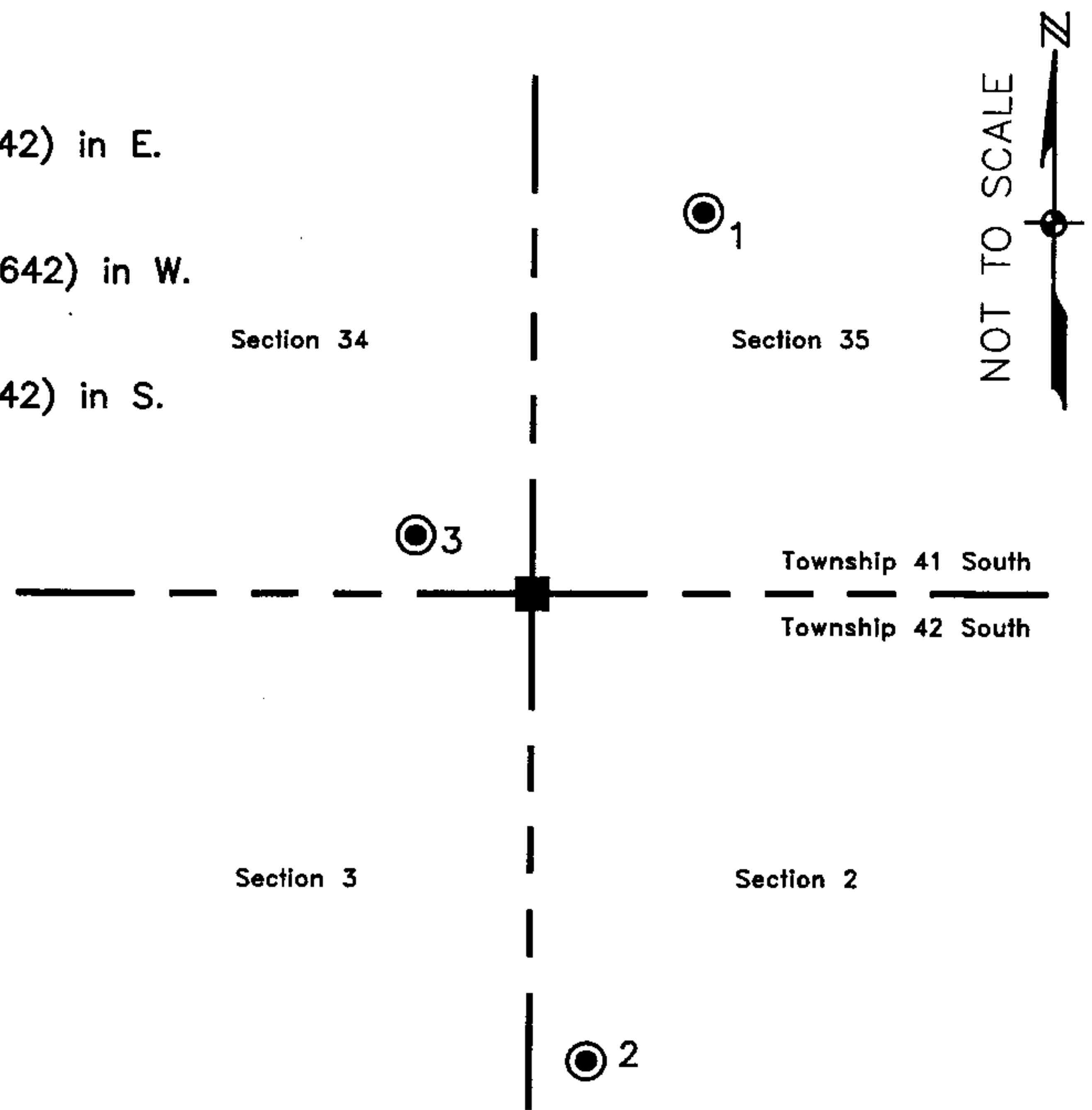
Horizontal datum (circle one): NAD27 NAD83(1986) (NAD83(1999)) other (explain)

Accuracy (circle one): 1st (2nd) 3rd other

NE corner of Section 3
Twp 42 South , Rge 27 East
Tallahassee Base Meridian,
Charlotte County(s), Florida

1. 24° 188.77'. Set PK Nail and Trav. Pt. Disc (LB 642) in E. face of 2" Pine.
2. 173° 207.94'. Set PK Nail and Trav. Pt. Disc (LB 642) in W. face 3" Pine.
3. 297° 62.75'. Set PK Nail and Trav. Pt. Disc (LB 642) in S. face of 8" Pine.

N.E. Cor Sec.3, Twp.42S., Rge.27E.
Set $\frac{3}{4}$ " Iron Pipe & Cap (LB 642).



Field Book: LB-33, Page 50

SURVEYORS CERTIFICATE:

I certify the monument and accessories indicated above were field located on November 11, 2005

(Signature)
SIGNATURE _____ 4912
Johnson Engineering, Inc. _____ PSM NO.
251 West Hickpochee (SR80) _____ 642
ADDRESS _____ LB NO.
La Belle _____ Florida 33935
CITY _____ STATE _____ ZIP
(863) 612-0594 _____ August 10, 2006
PHONE NUMBER _____ DATE

EMBOSSED SEAL OVER SIGNATURE

SEND ORIGINAL TO:
Department of Environmental Protection
Bureau of Surveying and Mapping
3900 Commonwealth Boulevard
Mail Station 105
Tallahassee, Florida 32399

D.E.P. USE ONLY
 Processed: 11-13-06 MB
 B.L.M. - I.D. 503700
 QUAD - I.D. 2313 Telegraph Swamp SE