

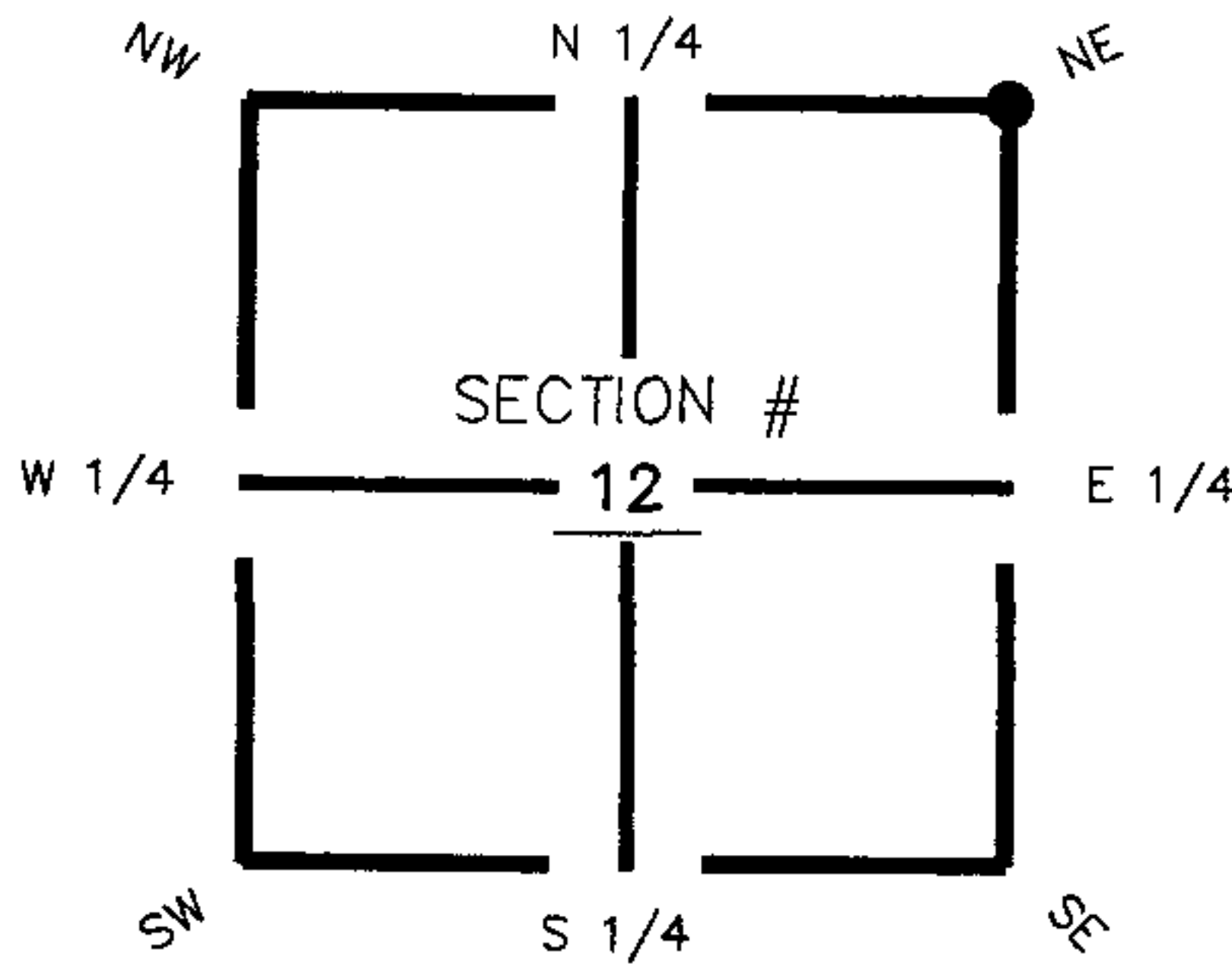
**FLORIDA DEPARTMENT OF ENVIRONMENTAL PROTECTION
CERTIFIED CORNER RECORD**

089378

DOC. # _____

CORNER DESCRIPTION: **MONUMENTATION DESCRIPTION (EVIDENCE FOUND OR METHOD TO SET)**

Depict corner with E-25



Found 4"x4"
Concrete Monument

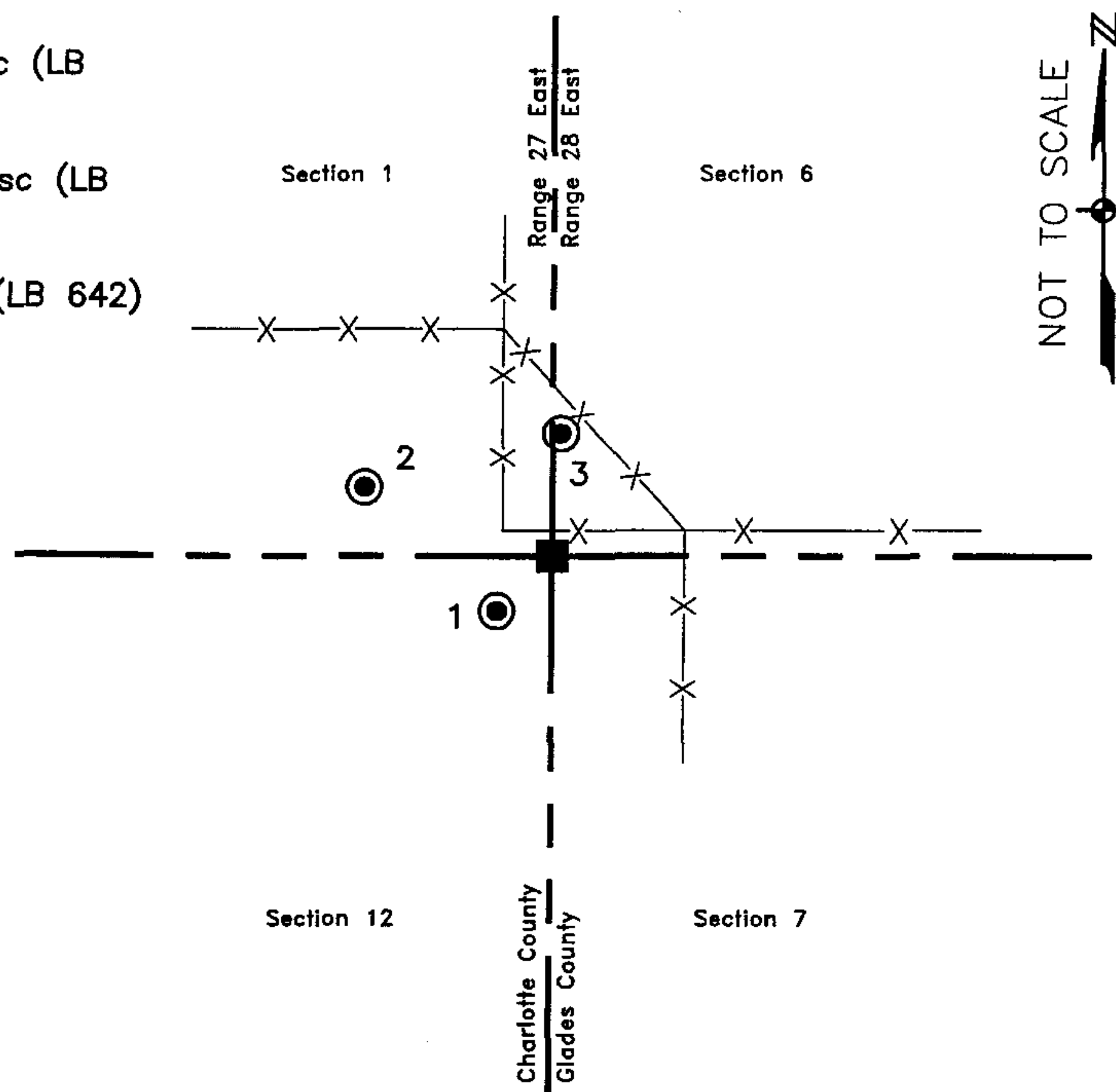
HORIZONTAL POSITION INFORMATION (if determined):

Latitude 26° 50' 33.52589" N Longitude 81° 33' 53.47860" W
 Y(NORTHING-Ft.) 912216.22 X(EASTING-Ft.) 798055.85 Zone FL83-WF
 Convergence 0° 11' 47.36086" Scale factor 0.999964258
 Coordinate determination (circle one): Field traverse GPS
 Horizontal datum (circle one): NAD27 NAD83(1986) NAD83(1999) other (explain)
 Accuracy (circle one): 1st 2nd 3rd other _____

NE corner of Section 12
 Twp 42 South , Rge 27 East
 Tallahassee Base Meridian,
Charlotte County(s), Florida

1. 225° 5.71'. Set PK Nail and Trav. Pt. Disc (LB 642) in E. face of 18" cypress tree.
2. 290° 13.99'. Set PK Nail and Trav. Pt. Disc (LB 642) in S. face of 24" cypress tree.
3. 4° 8.54'. Set PK Nail and Trav. Pt. Disc (LB 642) in W. face of 8" cypress tree.

N.E. Cor. Sec.12, Twp.42S., Rge.27E.
 Found 4"x4" Concrete Monument with
 Iron Rod in center.



Field Book: LB-31, Page 6

SURVEYORS CERTIFICATE:

I certify the monument and accessories indicated above were field located on August 16, 2005

[Signature]
 SIGNATURE _____ 4912
 Johnson Engineering, Inc. PSM NO. _____
 FIRM OR AGENCY _____ LB NO. _____
 251 West Hickpochee (SR80) ADDRESS _____
 La Belle, Florida 33935 CITY STATE ZIP
 (863) 612-0594 PHONE NUMBER DATE
 October 31, 2005

SEND ORIGINAL TO:
 Department of Environmental Protection
 Bureau of Surveying and Mapping
 3900 Commonwealth Boulevard
 Mail Station 105
 Tallahassee, Florida 32399

D.E.P. USE ONLY

Processed: 11-13-06 MB
 B.L.M. -- I.D. 700600
 QUAD -- I.D. 2313 Telegraph Swamp SE

EMBOSSSED SEAL OVER SIGNATURE