

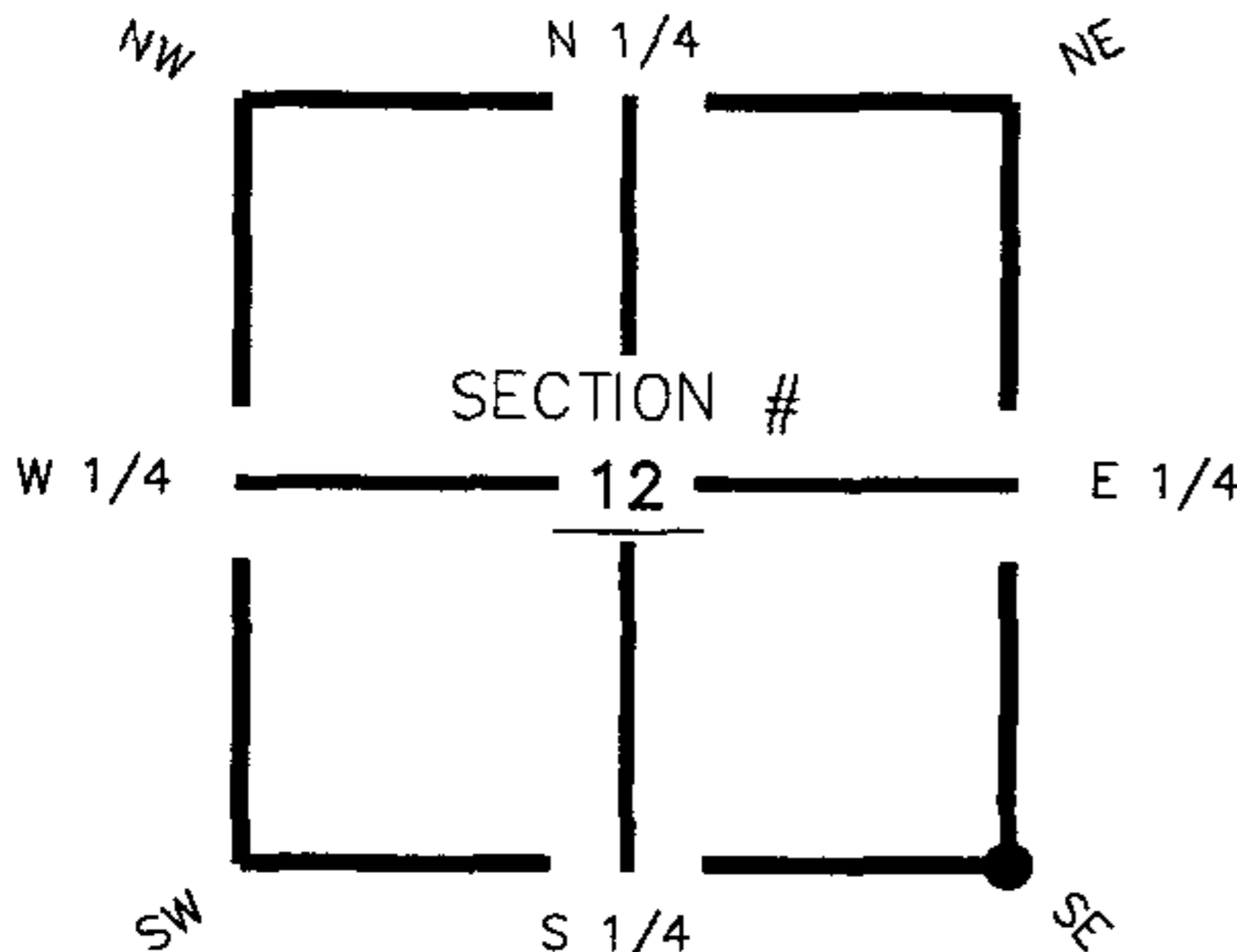
**FLORIDA DEPARTMENT OF ENVIRONMENTAL PROTECTION
CERTIFIED CORNER RECORD**

089380

DOC. # _____

CORNER DESCRIPTION: MONUMENTATION DESCRIPTION (EVIDENCE FOUND OR METHOD TO SET)

Depict corner with J-25



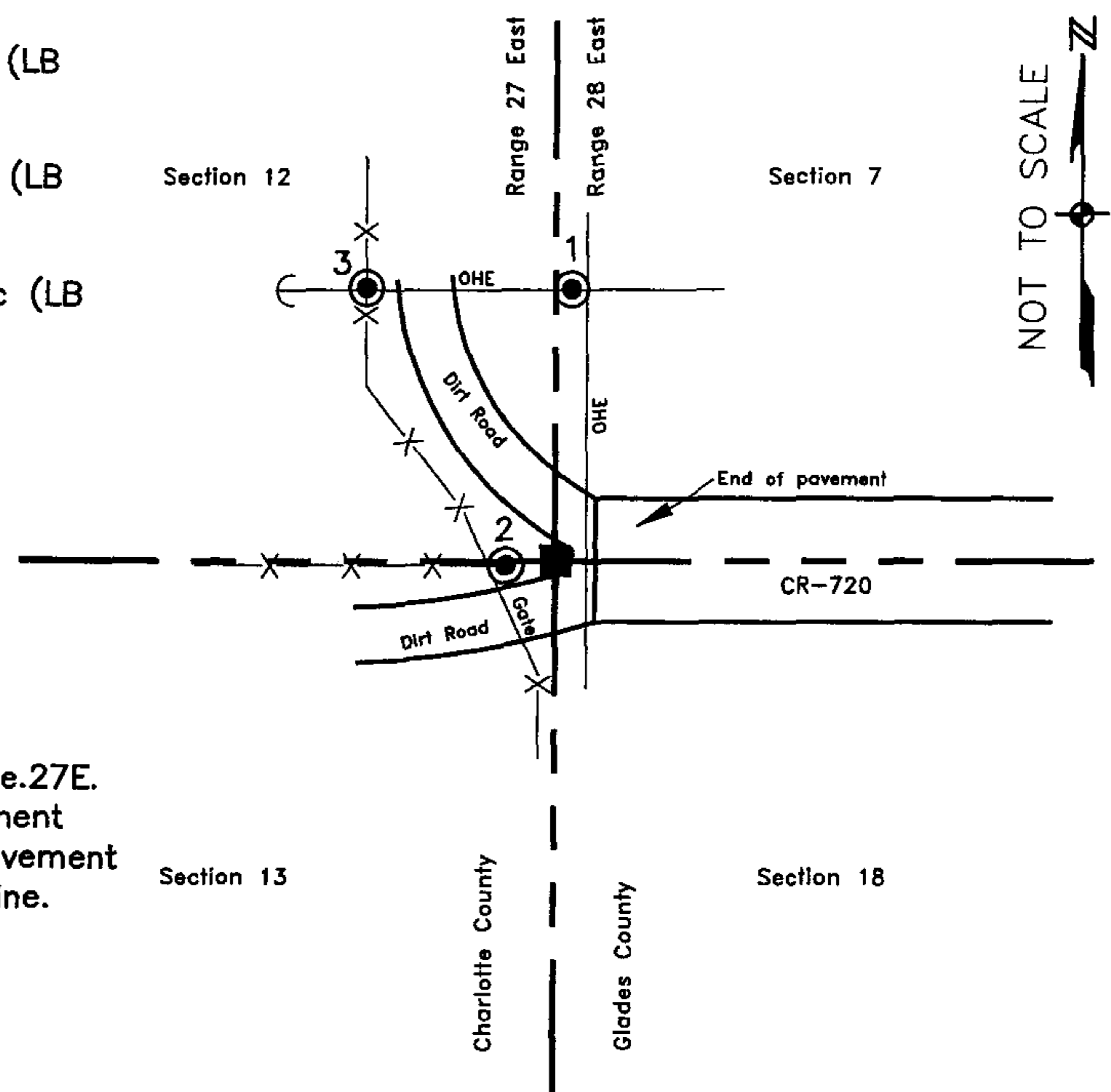
Found 4"x4" Concrete Monument

HORIZONTAL POSITION INFORMATION (if determined):

Latitude 26° 49' 40.86914" N Longitude 81° 33' 54.05350" W
 Y(NORTHING-Ft.) 906899.11 X(EASTING-Ft.) 798022.00 Zone FL83-WF
 Convergence 0° 11' 46.74454" Scale factor 0.999964247
 Coordinate determination (circle one): Field traverse GPS
 Horizontal datum (circle one): NAD27 NAD83(1986) NAD83(1999) other (explain)
 Accuracy (circle one): 1st 2nd 3rd other _____

SE corner of Section 12
 Twp 42 South , Rge 27 East
 Tallahassee Base Meridian,
Charlotte County(s), Florida

1. 00° 44.80'. Set PK Nail and Trav. Pt. Disc (LB 642) in W. face of wood power pole.
2. 265° 8.57'. Set PK Nail and Trav. Pt. Disc (LB 642) in N. face of gate post.
3. 325° 54.03'. Set PK Nail and Trav. Pt. Disc (LB 642) in E. face of anchor pole.



S.E. Cor. Sec.12, Twp.42S., Rge.27E.
 Found 4"x4" Concrete Monument
 (broken), ±10'W. of edge of pavement
 & ±8.5'E. of N.-S. fence line.

Field Book: LB-31, Page 4

SURVEYORS CERTIFICATE:

I certify the monument and accessories indicated above were field located on August 16, 2005

[Signature]
 SIGNATURE _____ 4912
 Johnson Engineering, Inc. PSM NO. 642
 FIRM OR AGENCY LB NO.
 251 West Hickpochee (SR80) ADDRESS
 La Belle, Florida 33935
 CITY STATE ZIP
 (863) 612-0594 PHONE NUMBER
 October 31, 2005 DATE

SEND ORIGINAL TO:
 Department of Environmental Protection
 Bureau of Surveying and Mapping
 3900 Commonwealth Boulevard
 Mail Station 105
 Tallahassee, Florida 32399

DEP. USE ONLY
 Processed: 11-13-06 MIB
 B.L.M. - I.D. 700500
 QUAD - I.D. 2313 Telegraph Swamp SE

EMBOSSSED SEAL OVER SIGNATURE