

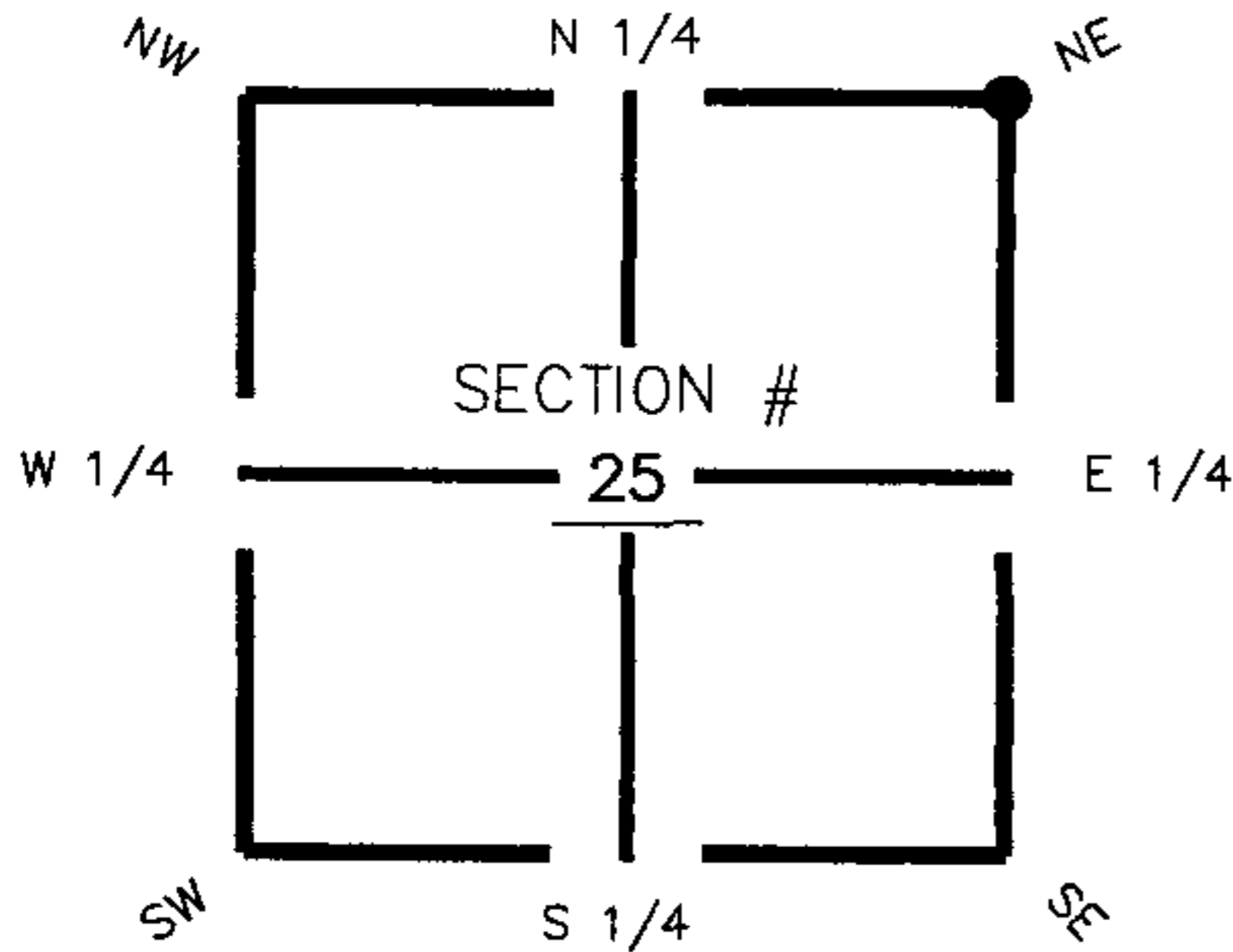
**FLORIDA DEPARTMENT OF ENVIRONMENTAL PROTECTION  
CERTIFIED CORNER RECORD**

**089386**

DOC. # \_\_\_\_\_

**CORNER DESCRIPTION:**      **MONUMENTATION DESCRIPTION (EVIDENCE FOUND OR METHOD TO SET)**

Depict corner with      ●      R-25



Found 4"x4"  
Concrete Monument

**HORIZONTAL POSITION INFORMATION ( if determined ):**

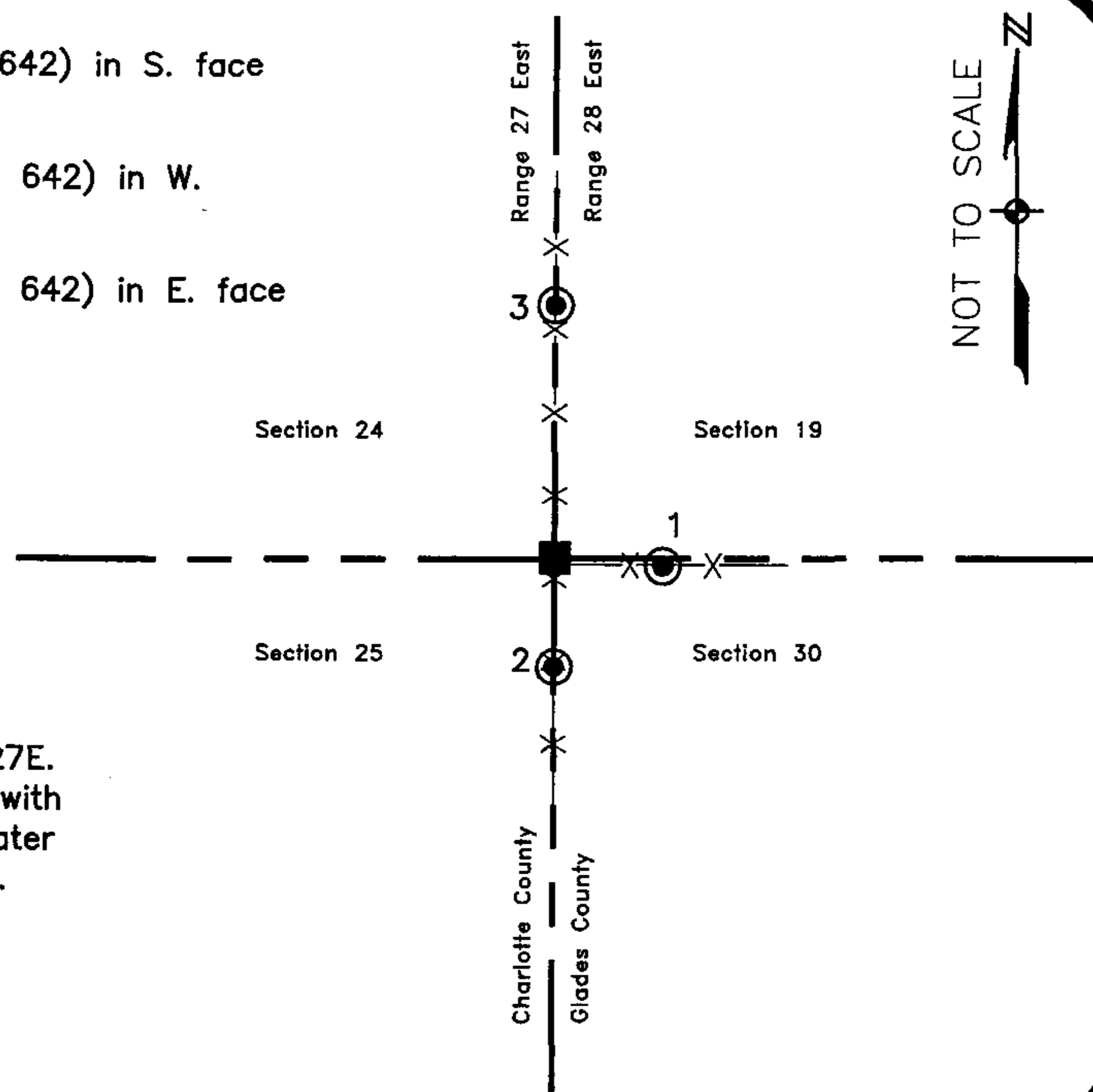
Latitude 26° 47' 55.64534" N      Longitude 81° 33' 55.53020" W  
 Y(NORTHING-Ft.) 896273.88      X(EASTING-Ft.) 797924.58      Zone FL83-WF  
 Convergence 0° 11' 45.36577"      Scale factor 0.999964216

NE corner of Section 25  
 Twp 42 South , Rge 27 East  
 Tallahassee Base Meridian,  
Charlotte County(s), Florida

Coordinate determination (circle one):      Field traverse      (GPS)  
 Horizontal datum (circle one):      NAD27      NAD83(1986)      (NAD83(1999))      other (explain)  
 Accuracy (circle one):      1st      (2nd)      3rd      other \_\_\_\_\_

1. 94° 7.15'. Set PK Nail and Trav. Pt. Disc (LB 642) in S. face of fence post.
2. 180° 7.87'. Set PK Nail and Trav. Pt. Disc (LB 642) in W. face of fence post.
3. 00° 22.11'. Set PK Nail and Trav. Pt. Disc (LB 642) in E. face of 6" Pine tree.

N.E. Cor. Sec.25, Twp.42S., Rge.27E.  
 Found 4"x4" Concrete Monument with  
 Brass Disc (not legible due to water  
 depth). 0.3'W. of fence corner.



Field Book: LB-31, Page 37

**SURVEYORS CERTIFICATE:**

I certify the monument and accessories indicated above were field located on August 30, 2005

*[Signature]*  
 SIGNATURE \_\_\_\_\_ 4912  
 JOHNSON ENGINEERING, INC. PSM NO. \_\_\_\_\_  
 FIRM OR AGENCY \_\_\_\_\_ 642  
 LB NO. \_\_\_\_\_  
 251 West Hickpochee (SR80) ADDRESS \_\_\_\_\_  
 La Belle Florida 33935  
 STATE ZIP \_\_\_\_\_  
 (863) 612-0594 October 31, 2005  
 PHONE NUMBER DATE

**SEND ORIGINAL TO:**  
 Department of Environmental Protection  
 Bureau of Surveying and Mapping  
 3900 Commonwealth Boulevard  
 Mail Station 105  
 Tallahassee, Florida 32399

D.E.P. USE ONLY

Processed: 11-13-06 MB  
 B.L.M. - I.D. 700300  
 QUAD - I.D. 2313 Telegraph Swamp SE

EMBOSSSED SEAL OVER SIGNATURE