

FLORIDA DEPARTMENT OF ENVIRONMENTAL PROTECTION

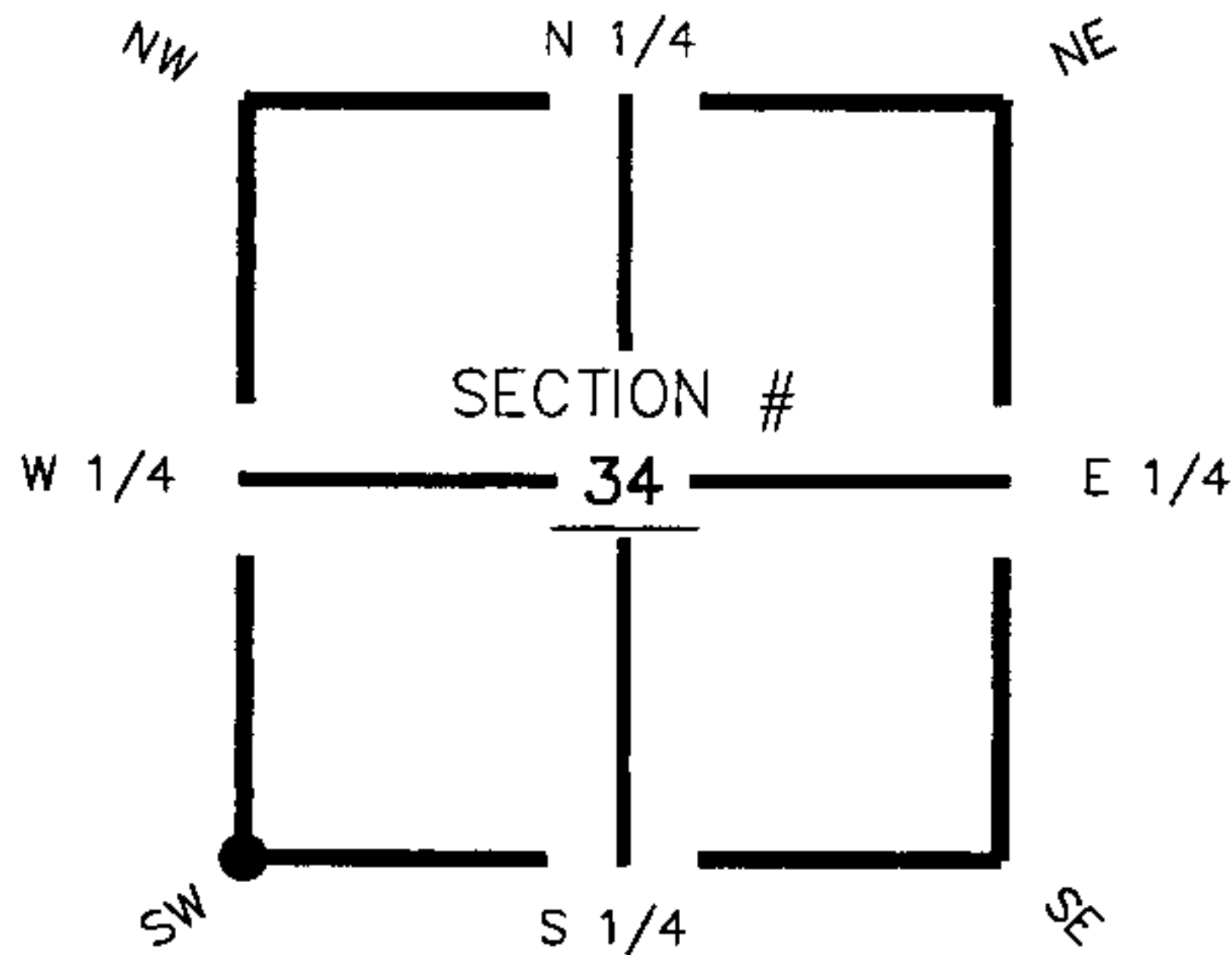
CERTIFIED CORNER RECORD

089389

DOC. # _____

CORNER DESCRIPTION: MONUMENTATION DESCRIPTION (EVIDENCE FOUND OR METHOD TO SET)

Depict corner with Z-13



Found 4"x4"
Concrete Monument

HORIZONTAL POSITION INFORMATION (if determined):

Latitude 26° 46' 09.27518" N Longitude 81° 36' 53.42517" W
 Y(NORTHING-Ft.) 885481.45 X(EASTING-Ft.) 781837.75 Zone FL83-WF
 Convergence 0° 10' 24.51860" Scale factor 0.999959284
 Coordinate determination (circle one): Field traverse GPS
 Horizontal datum (circle one): NAD27 NAD83(1986) NAD83(1999) other (explain)
 Accuracy (circle one): 1st 2nd 3rd other _____

SW corner of Section 34
 Twp 42 South , Rge 27 East
 Tallahassee Base Meridian,
Charlotte County(s), Florida

1. 83' 5.96'. Set PK Nail and Trav. Pt. Disc (LB 642) in S. face of fence post.
2. 188' 7.48'. Set PK Nail and Trav. Pt. Disc (LB 642) in N. face of fence post.
3. 233' 61.18'. Set PK Nail and Trav. Pt. Disc (LB 642) in E. face of crooked 6" Pine tree.

S.W. Cor. Sec.34, Twp.42S., Rge.27E.
 Found 4"x4" Concrete Monument (pin top)
 0.4'E. & 0.3'S. of fence corner.

NOT TO SCALE

Field Book: LB-31, Page 48

SURVEYORS CERTIFICATE:

I certify the monument and accessories indicated above were field located on Sept. 2, 2005

[Signature]
 SIGNATURE _____ 4912
 JOHNSON ENGINEERING, INC. PSM NO. _____
 FIRM OR AGENCY _____ 642
 251 West Hickpochee (SR80) ADDRESS _____
 La Belle STATE OF FLORIDA CITY _____ Florida 33935 ZIP
 (863) 612-0594 PHONE NUMBER _____ November 1, 2005 DATE

SEND ORIGINAL TO:
 Department of Environmental Protection
 Bureau of Surveying and Mapping
 3900 Commonwealth Boulevard
 Mail Station 105
 Tallahassee, Florida 32399

D.E.P. USE ONLY
Processed: <u>11-13-06</u> <i>MB</i>
B.L.M. - I.D. <u>400100</u>
QUAD - I.D. <u>2313 Telegraph Swamp</u>

EMBOSSSED SEAL OVER SIGNATURE