

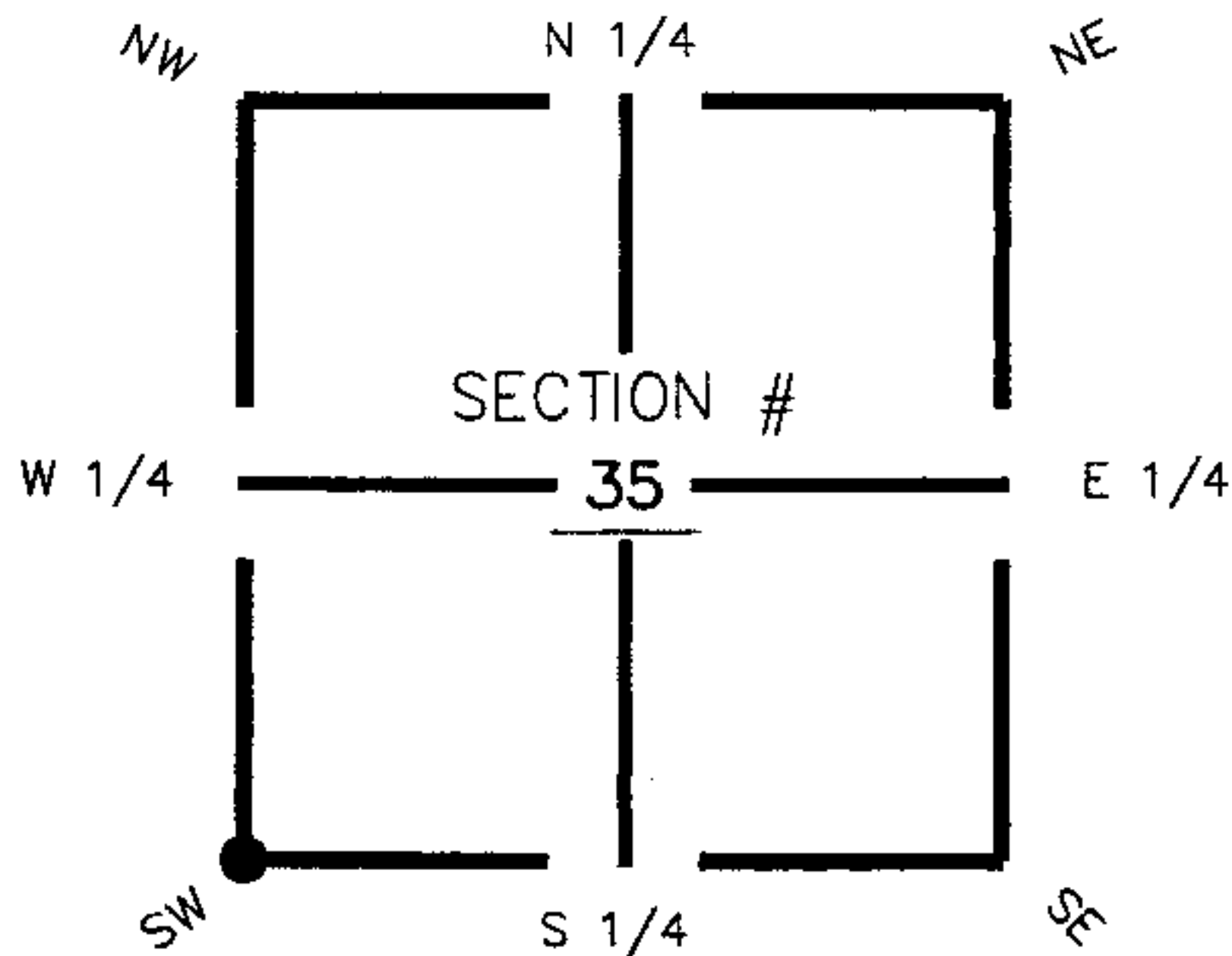
FLORIDA DEPARTMENT OF ENVIRONMENTAL PROTECTION

CERTIFIED CORNER RECORD

DOC. # 089391

CORNER DESCRIPTION: MONUMENTATION DESCRIPTION (EVIDENCE FOUND OR METHOD TO SET)

Depict corner with Z-17



Found 4"x4"
Concrete Monument

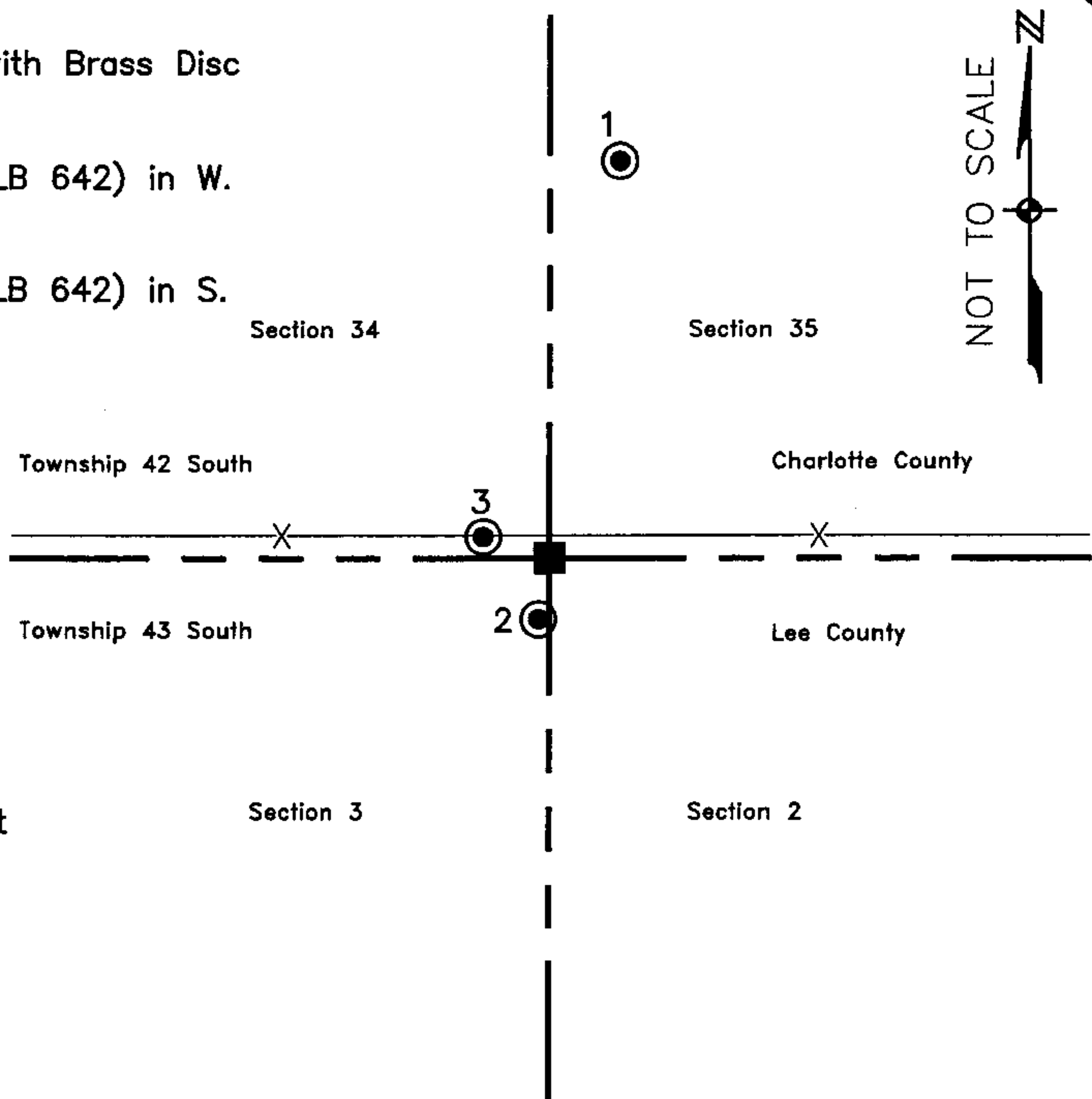
HORIZONTAL POSITION INFORMATION (if determined):

Latitude 26° 46' 09.71077" N Longitude 81° 35' 54.55646" W
 Y(NORTHING-Ft.) 885541.93 X(EASTING-Ft.) 787173.18 Zone FL83-WF
 Convergence 0° 10' 51.03671" Scale factor 0.999960854

SW corner of Section 35
 Twp 42 South , Rge 27 East
 Tallahassee Base Meridian,
Charlotte County(s), Florida

Coordinate determination (circle one): Field traverse (GPS)
 Horizontal datum (circle one): NAD27 NAD83(1986) (NAD83(1999)) other (explain)
 Accuracy (circle one): 1st (2nd) 3rd other _____

1. 10' 65.53'. Found 4"x4" Concrete Monument with Brass Disc Charlotte Co. stamped Ref. Mon. 4227.34Z17.
2. 190' 10.00'. Set PK Nail and Trav. Pt. Disc (LB 642) in W. face of Pepper Berry tree clump.
3. 283' 11.82'. Set PK Nail and Trav. Pt. Disc (LB 642) in S. face of fence post.



S.W. Cor. Sec.35, Twp.42S., Rge.27E.
 Found 4"x4" Concrete Monument Post
 0.5'S. of E.-W. fence line.

Field Book: LB-31, Page 46

SURVEYORS CERTIFICATE:

I certify the monument and accessories indicated above were field located on August 31, 2005

[Signature]
 SIGNATURE _____ 4912
 Johnson Engineering, Inc. PSM NO. _____ 642
 FIRM OR AGENCY _____ LB NO. _____
 251 West Hickory Lane (SR80) ADDRESS _____
 La Belle, Florida 33935 CITY STATE ZIP
 (863) 612-0594 PHONE NUMBER November 1, 2005 DATE

SEND ORIGINAL TO:
 Department of Environmental Protection
 Bureau of Surveying and Mapping
 3900 Commonwealth Boulevard
 Mail Station 105
 Tallahassee, Florida 32399

D.E.P. USE ONLY

Processed: 11-13-06 MB
 B.L.M. - I.D. 500100
 QUAD - I.D. 2313 Telegraph Swamp SE

EMBOSSSED SEAL OVER SIGNATURE