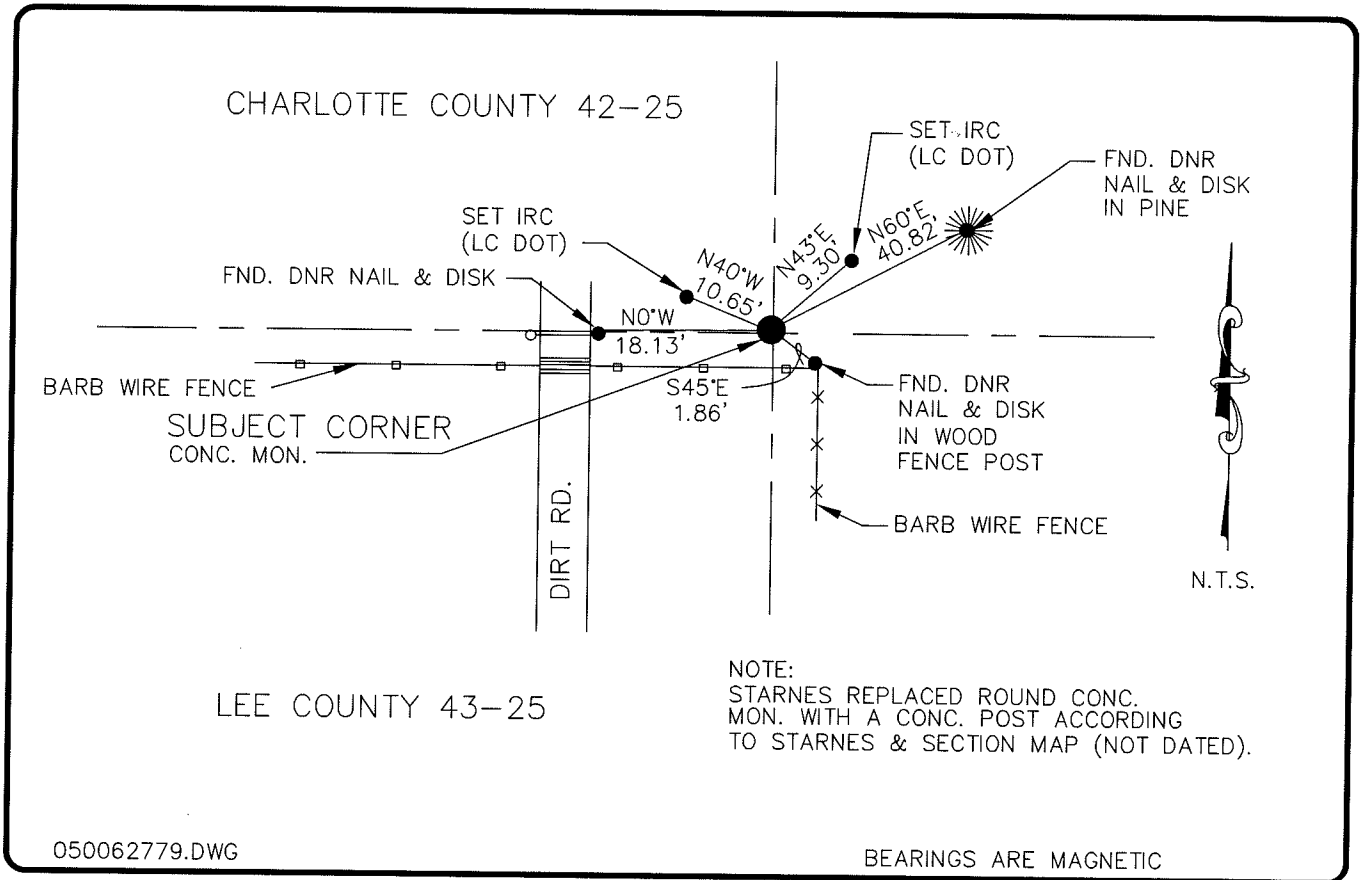


**LAND CORNER RECORD**

**PUBLIC WORKS  
LEE COUNTY, FLORIDA**

Address - 1500 Monroe St., Ft. Myers, Fla. 33901

Phone : (239) 479-8900



NOTE:  
STARNES REPLACED ROUND CONC. MON. WITH A CONC. POST ACCORDING TO STARNES & SECTION MAP (NOT DATED).

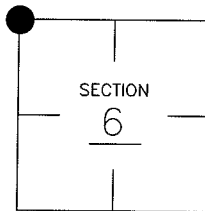
050062779.DWG

BEARINGS ARE MAGNETIC

**COMMENTS:**

**CORNER DESCRIPTION**

NW Corner  
Section 6  
Township 43  
Range 25



STARNES DESCRIBED NW COR. OF SECTION 6 AS A ROUND CONC. MONUMENT AND SET REFERENCE POINTS, ACCEPTED AS SECTION CORNER.

**HORIZONTAL POSITION INFORMATION**

Florida West Zone, NAD 1983(1990 Adjustment)  
 Northing(ft) 885575.79 Easting(ft) 7023224.42  
 Latitude 26°46'11.839619" Longitude 81°51'30.719765"  
 Scale Factor 0.99994361

**EXISTING CERTIFIED CORNER RECORDS**

| Document No. | Date           |
|--------------|----------------|
| <u>14744</u> | <u>4-18-82</u> |
|              |                |
|              |                |
|              |                |
|              |                |

The above documents are based on FDEP Bureau of Surveying and Mapping Record Information.

I hereby certify the monument and accessories shown above were field located on 7-6-04.

**Arthur W. Parsons, County Surveyor**  
 Professional Surveyor and Mapper  
 Florida Certificate No. 2987  
 Date Signed 12-19-05

Lee County Department of Transportation  
 1500 Monroe Street  
 Fort Myers, Florida 33901  
 Phone: (239) 479-8900

POINT NO. 3

BLM REFERENCE NO. T43SR25E100700