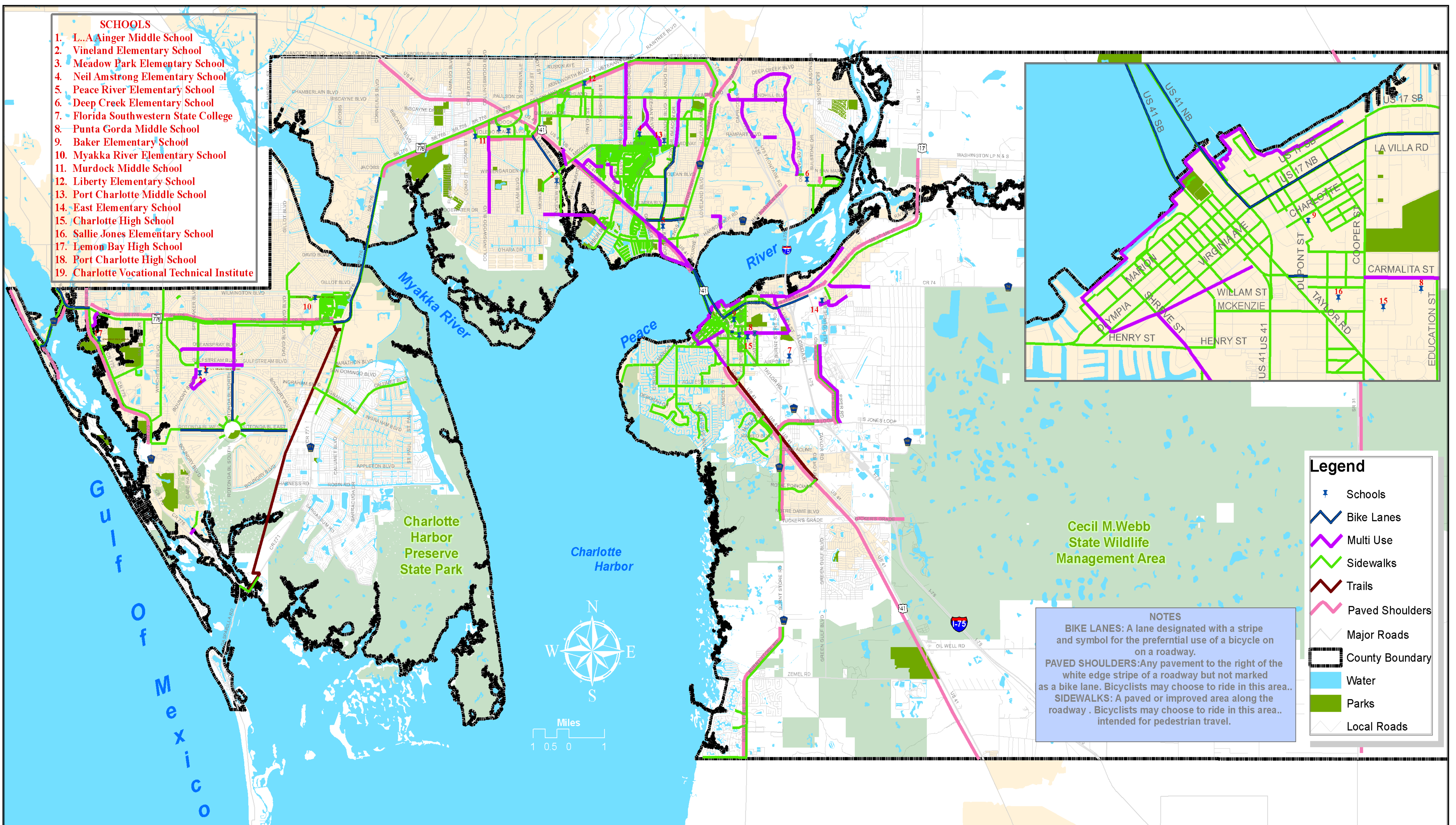


- SCHOOLS**
1. L.A Ainger Middle School
  2. Vineland Elementary School
  3. Meadow Park Elementary School
  4. Neil Armstrong Elementary School
  5. Peace River Elementary School
  6. Deep Creek Elementary School
  7. Florida Southwestern State College
  8. Punta Gorda Middle School
  9. Baker Elementary School
  10. Myakka River Elementary School
  11. Murdock Middle School
  12. Liberty Elementary School
  13. Port Charlotte Middle School
  14. East Elementary School
  15. Charlotte High School
  16. Sallie Jones Elementary School
  17. Lemon Bay High School
  18. Port Charlotte High School
  19. Charlotte Vocational Technical Institute



**Legend**

- Schools
- Bike Lanes
- Multi Use
- Sidewalks
- Trails
- Paved Shoulders
- Major Roads
- County Boundary
- Water
- Parks
- Local Roads

**NOTES**

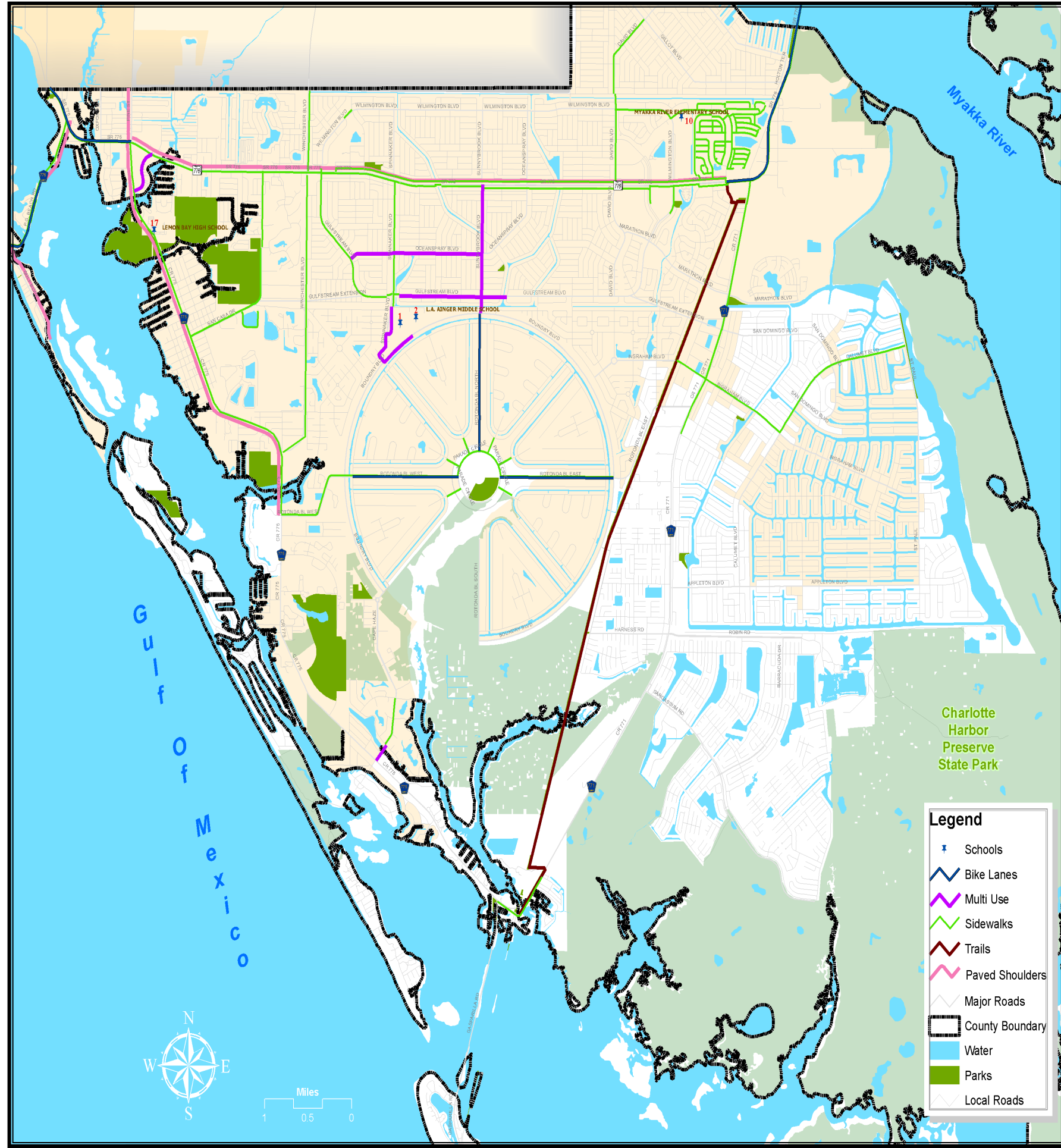
**BIKE LANES:** A lane designated with a stripe and symbol for the preferential use of a bicycle on a roadway.

**PAVED SHOULDERS:** Any pavement to the right of the white edge stripe of a roadway but not marked as a bike lane. Bicyclists may choose to ride in this area..

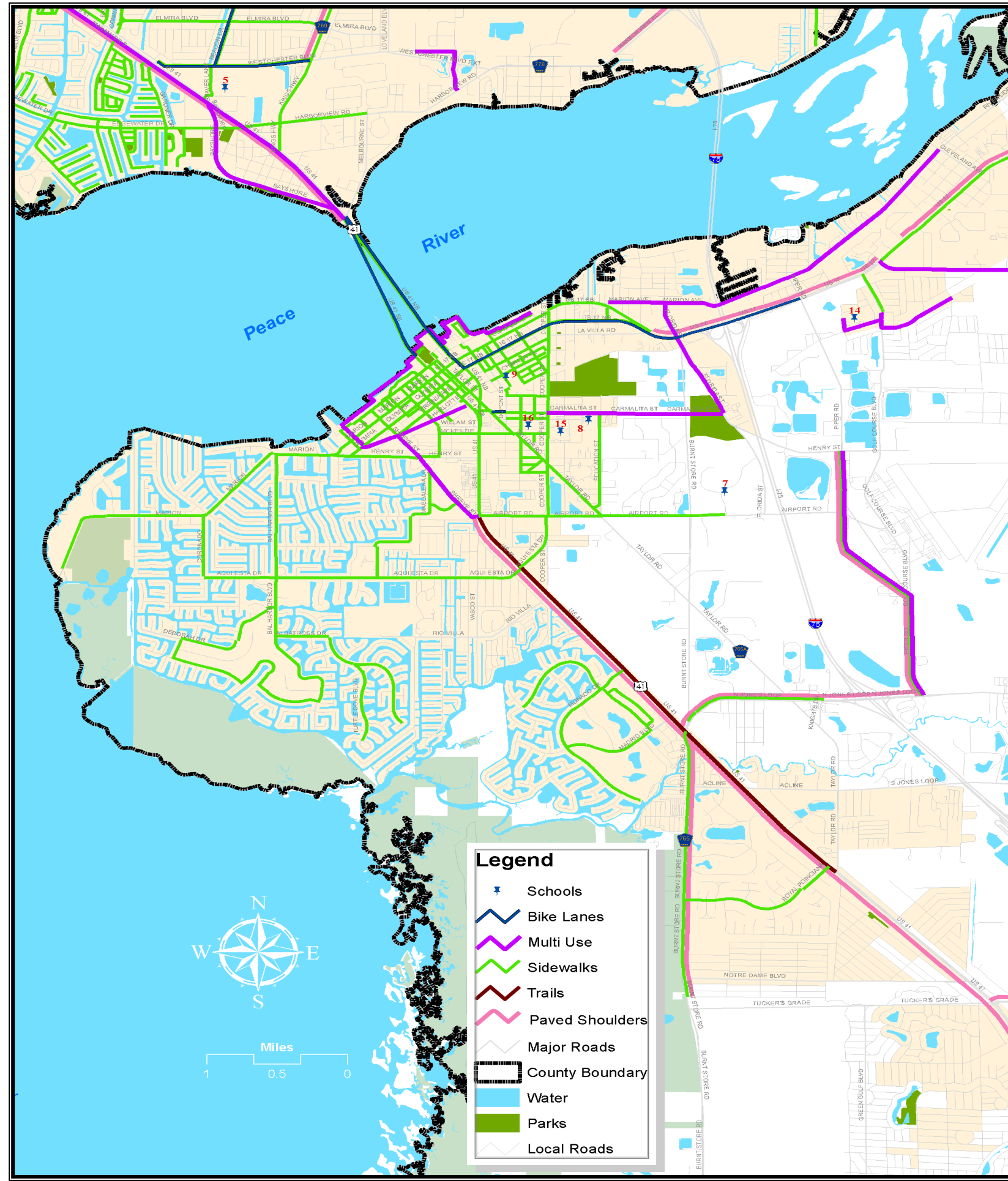
**SIDEWALKS:** A paved or improved area along the roadway . Bicyclists may choose to ride in this area.. intended for pedestrian travel.



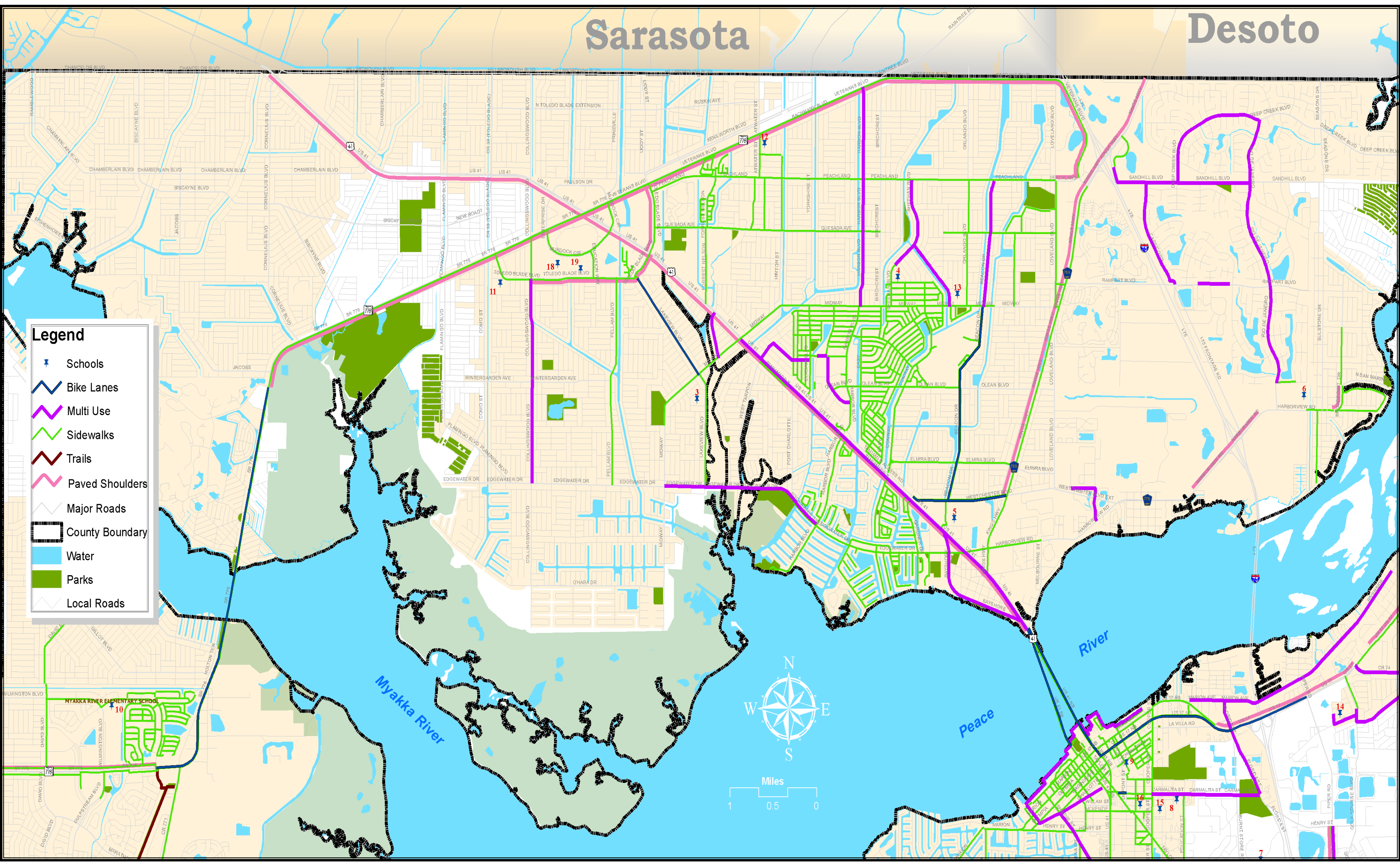
**CHARLOTTE COUNTY—PUNTA GORDA MPO BICYCLE AND PEDESTRIAN FACILITIES MAP**



WEST COUNTY BICYCLE-PEDESTRIAN FACILITIES MAP



SOUTH COUNTY BICYCLE-PEDESTRIAN FACILITIES MAP



MID COUNTY BICYCLE-PEDESTRIAN FACILITIES MAP

**ALWAYS WEAR A HELMET**

Wearing a Helmet is the first step to prevent the impacts of a crash and an injury.

A bicycle rider or passenger under 16 years of age **MUST** wear a bicycle helmet that is properly fitted, fastened securely, and meets a nationally recognized standard.

Bicycle helmets, properly worn, have been found very effective at reducing the incidence and severity of head, brain, and upper facial injury. (Head injuries account for about one third of the hospital emergency room visits of injured cyclists.) Adults are strongly encouraged to wear a bike helmet.



**CHARLOTTE COUNTY —PUNTA GORDA MPO**

Charlotte County-Punta Gorda Metropolitan Planning Organization (MPO) was created in July of 1992. The MPO was established to provide a forum for transportation planning services, coordinate intergovernmental needs and goals, and facilitate public involvement.

The MPO BOARD is a governing body with the authority to develop and adopt transportation plans, programs, and policies. The MPO BOARD consists of three Charlotte County commissioners, one City of Punta Gorda elected official, one Charlotte County Airport Authority commissioner and one non-voting member from the Florida Department of Transportation (FDOT).

MPO BOARD MEETINGS are regularly held the second Monday in the months of February, May, August, October, and December .

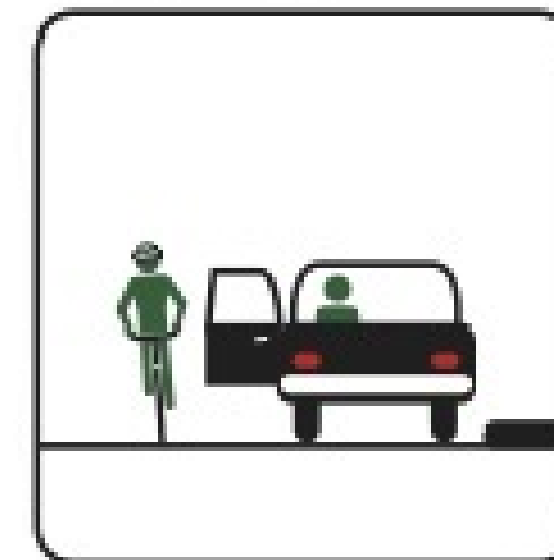
[WWW.CCMPO.COM](http://WWW.CCMPO.COM)



**CHARLOTTE COUNTY - PUNTA GORDA MPO BICYCLE - PEDESTRIAN MAP**



2016



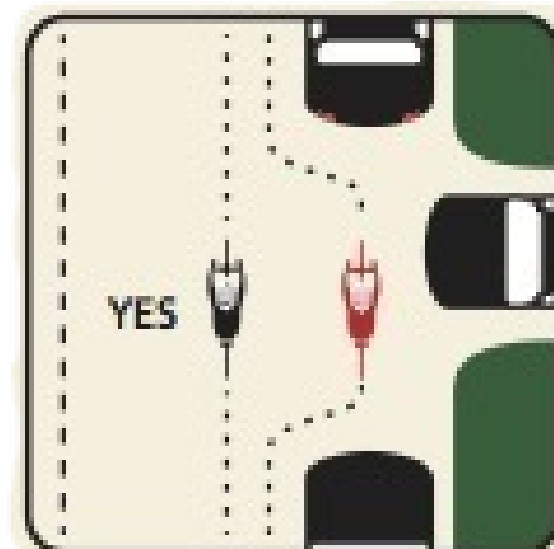
**LOOK FOR OPENING CAR DOOR**

Whenever possible ride about a car door's width away from parked cars



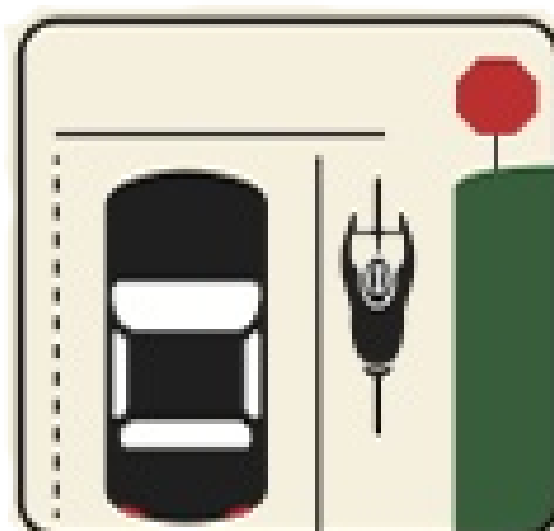
**RIDE SLOWLY ON SIDEWALKS**

On sidewalks pedestrians have the right-of-way. You must give them an audible warn-



**NEVER WEAVE BETWEEN CARS**

Ride in a straight line and avoid weaving between parked cars.



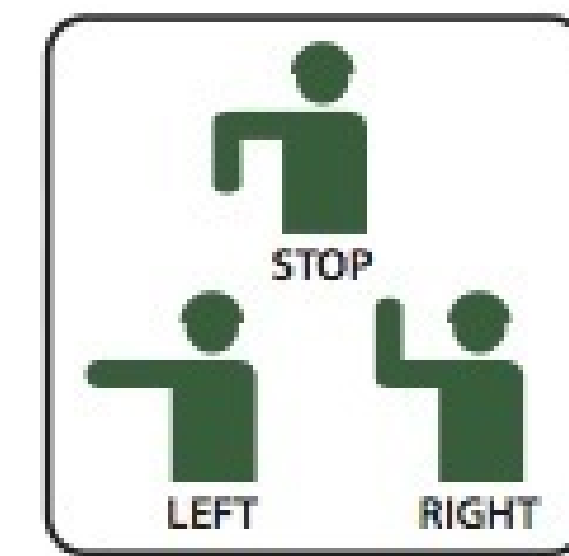
**OBEY ALL TRAFFIC SIGNS**

Bicyclists must obey all the rules that apply to the driver of a motor vehicle .



**USE LIGHTS AT NIGHT**

The law requires a white headlight with a red rear reflector and tail light



**USE HAND SIGNALS**

Hand signals tell motorists and pedestrians what you intend to do.



**IT'S THE LAW**

A rider 16 years or below of age must wear a bicycle helmet



**KEEP YOUR BIKE IN SHAPE**

Maintain your bike in good working condition. Check brakes regularly and keep tires properly inflated.

**SAFETY TIPS FOR PEDESTRIANS**

**WATCH YOUR WALK WAYS**

Walk on sidewalks and in crosswalks whenever possible. It is important to pay attention to walk signals and keep a safe distance when standing on street corners.

**KNOW YOUR NO-ZONES**

Be careful of the blind spots, or No-Zones, around cars, trucks, and buses when walking near or around them.

**STOPPING DISTANCES**

Use caution when crossing intersections and streets. You may think vehicles will stop for you, but they may not see you or even be able to stop.

**MAKE YOURSELF VISIBLE**

Wear bright or reflective clothing, especially when walking at night. Dressing to be seen will make it safer for you and drivers.

