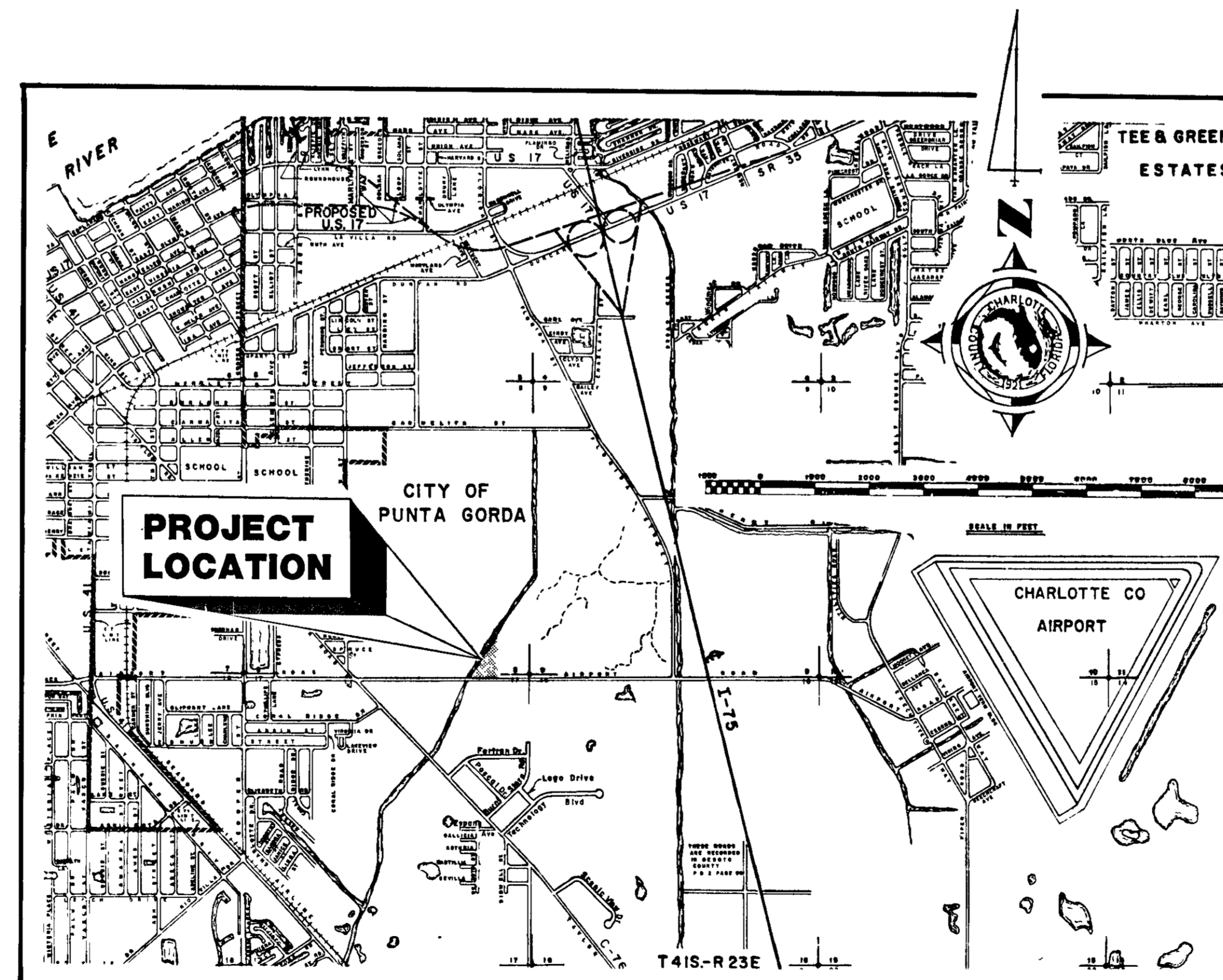


# CHARLOTTE COUNTY DEPARTMENT OF PUBLIC WORKS

## CHARLOTTE COUNTY SHERIFF'S OFFICE

### ADDITIONAL PARKING LOT

CHARLOTTE COUNTY PUBLIC WORKS REVIEWS					
DEPARTMENT	APP	DATE	DEPARTMENT	APP	DATE
Asst Engineer			Road Supl		
Design Engineer			Street Lighting		
Project Coord			R O W Coord.		
County Surveyor			Traffic Engineer		
Utility Coord			Bike Coord		
Plans Examiner					
RELEASED: _____ Date _____ County Engineer					



**T. 41 - R. 23 E. - SEC. 8**

PLANS PREPARED BY:  
CHARLOTTE COUNTY ENGINEERING DEPARTMENT

**GENERAL NOTES :**

1. Vertical Datum is USC. & GS. NGVD 1929.
2. All existing signs and mail boxes shall be relocated at edge of new pavement and installed per MUTCD and Post Office specifications.
3. Utilities and their locations shown on this plan are approximate and all utilities may not be shown. Utility locations are to be verified by the contractor with each concerned utility company prior to construction. The relocation of any is to be coordinated with the utility Company by the contractor.
4. Quantities shown are approximate and should be verified by the contractor. Written dimensions govern over scale distances.
5. Saw cut existing edge of pavement to provide clean edge of base course and pavement.

**INDEX OF ROADWAY PLANS**

SHEET NO.	SHEET DESCRIPTION
1	LOCATION MAP
2	SPECIAL DETAILS
3	PLAN
4	SIGNING & PAVEMENT MARKING
5	GRADING & LANDSCAPING

**ROADWAY PLANS**

APPROVED BY: \_\_\_\_\_  
LAWRENCE DOMBROWSKI  
COUNTY ENGINEER

DATE: \_\_\_\_\_

