

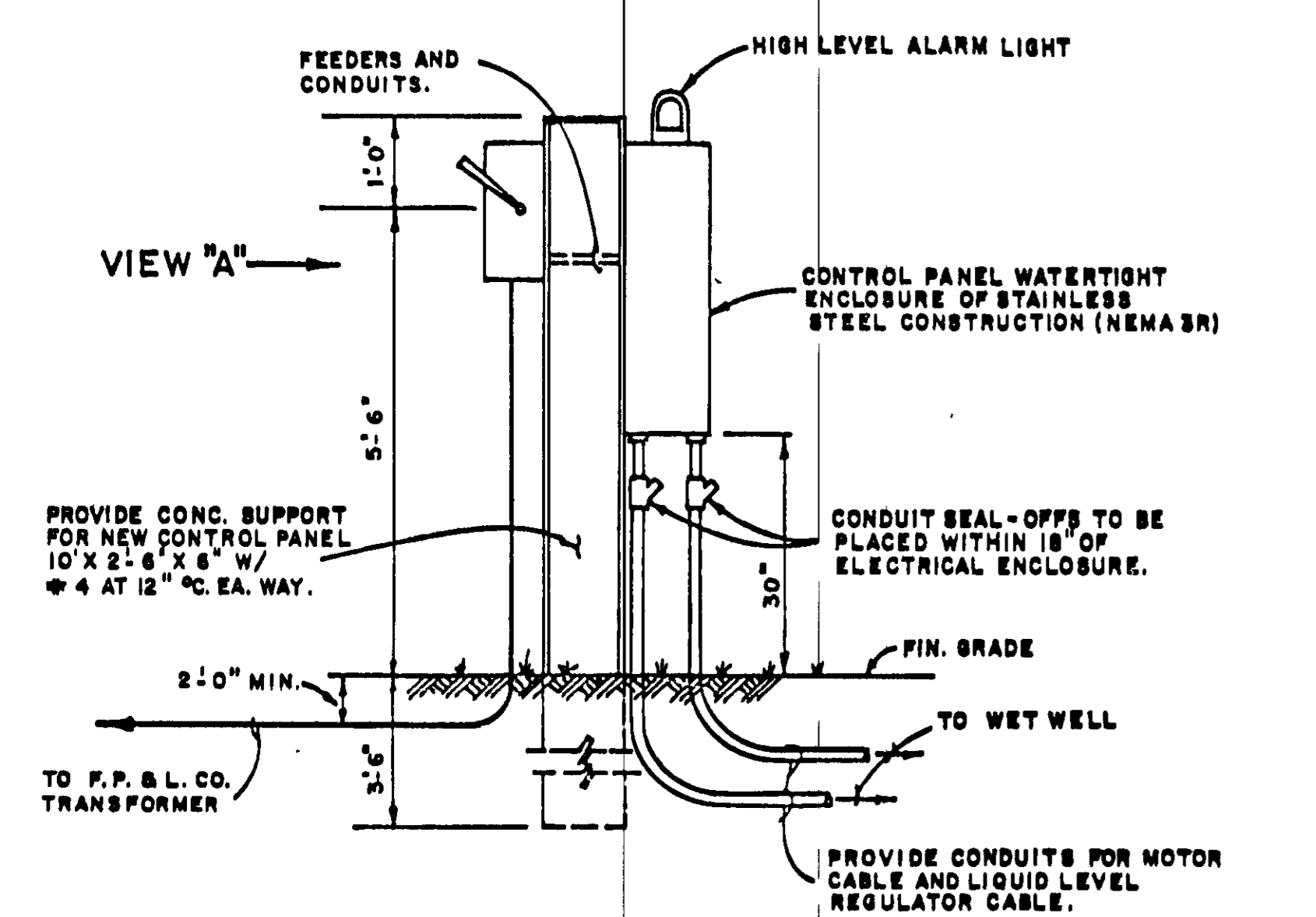
PUMP DATA: MANUFACTURER, FLYGT
 MOD. No. CS-3127 IMP. No. 484 MOTOR, HP, 10 RPM, 1750
 VOLTS, 230/460 3PHASE, 60 HERTZ

OPERATING CONDITIONS: 158 GPM AT 51' TDH.

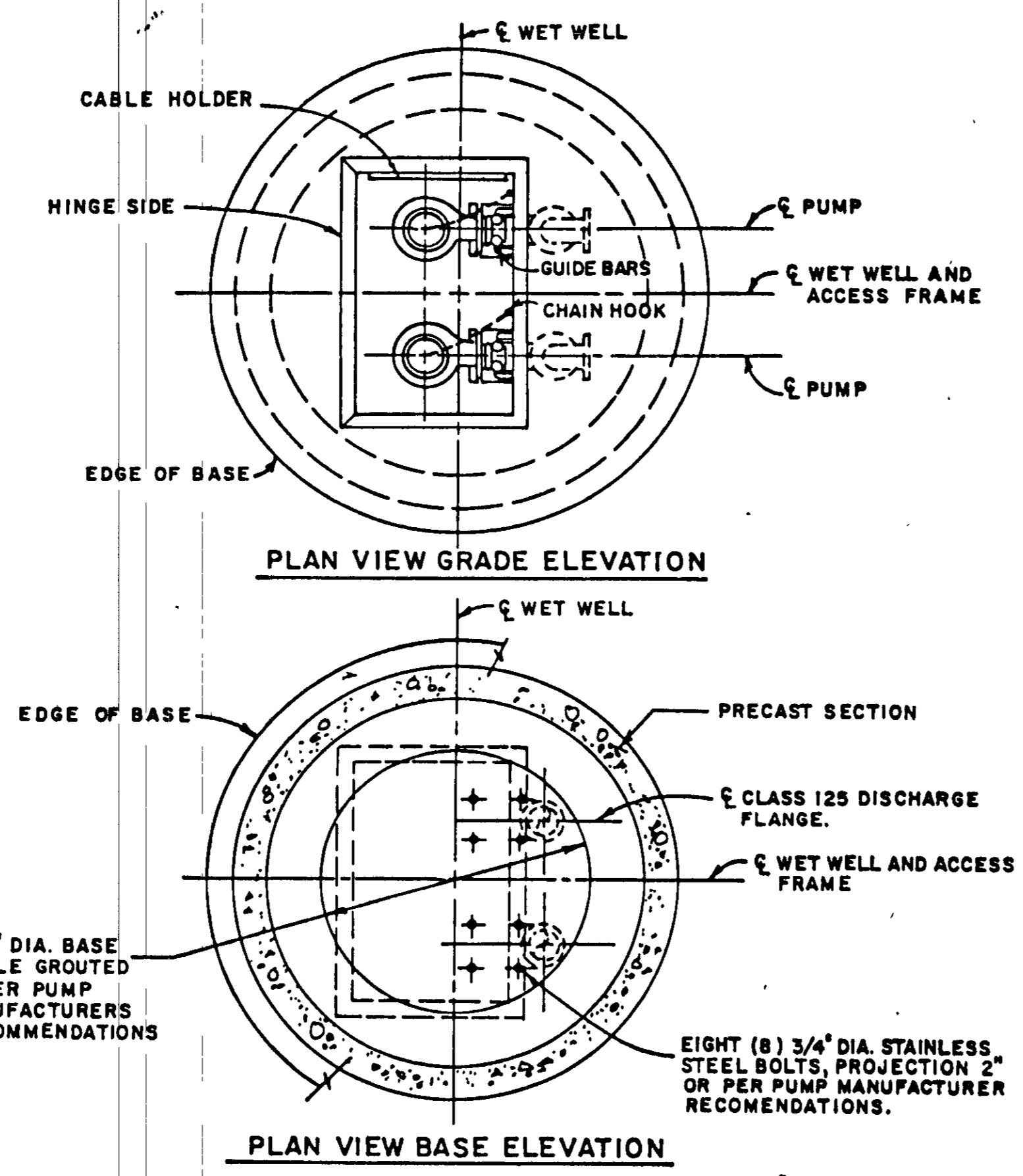
WET WELL: SIZED FOR MINIMUM PUMP CYCLE TIME OF 10 MINUTES AND A MAXIMUM OF 6 PUMP STARTS PER HOUR. WORKING DEPTH 4 1/2 FT. WORKING VOLUME 460 GALS.

ELECTRICAL: FEEDERS AND CONDUIT * MAIN SWITCH * POLES * AMPS. * PER MFG.

**PUMPING STATION DETAIL
ELEVATION**



**CONTROL PEDESTAL DETAIL
ELEVATION**

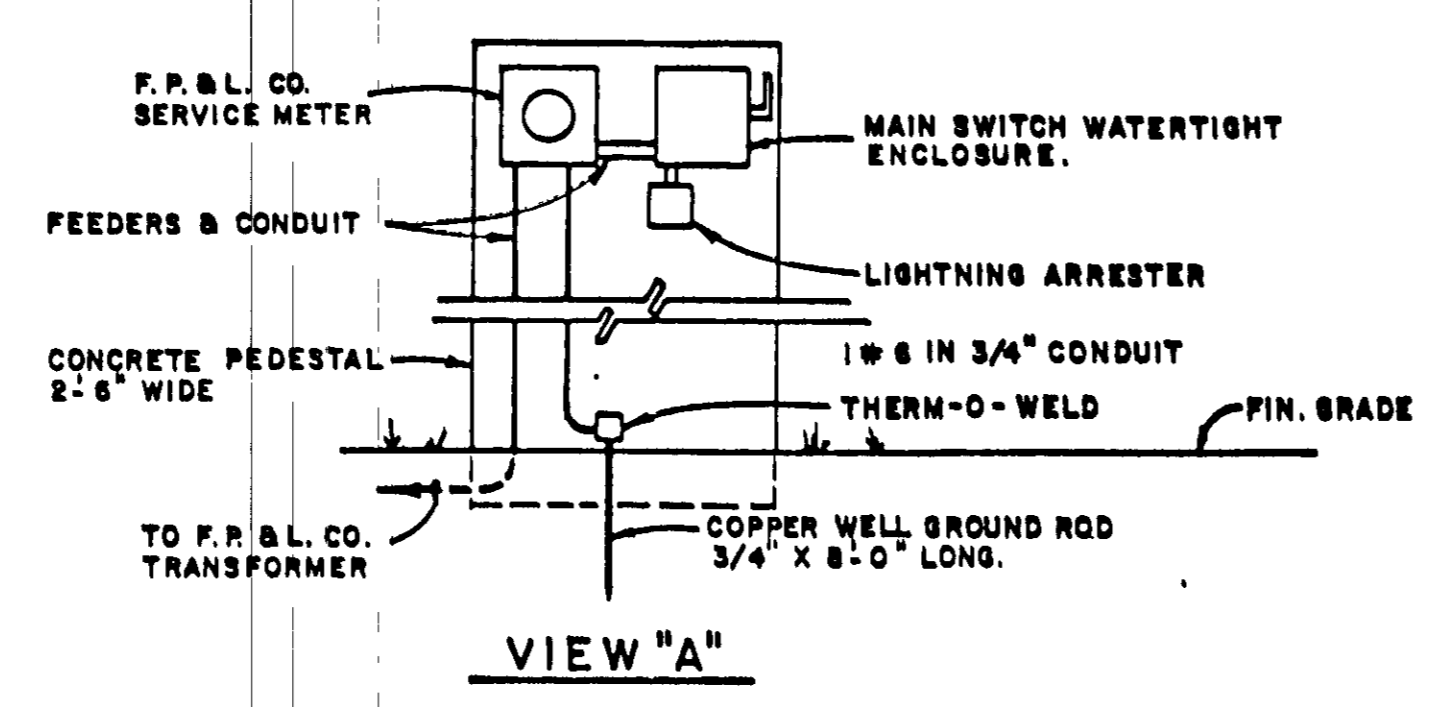


**PUMPING STATION DETAIL
PLAN VIEWS**

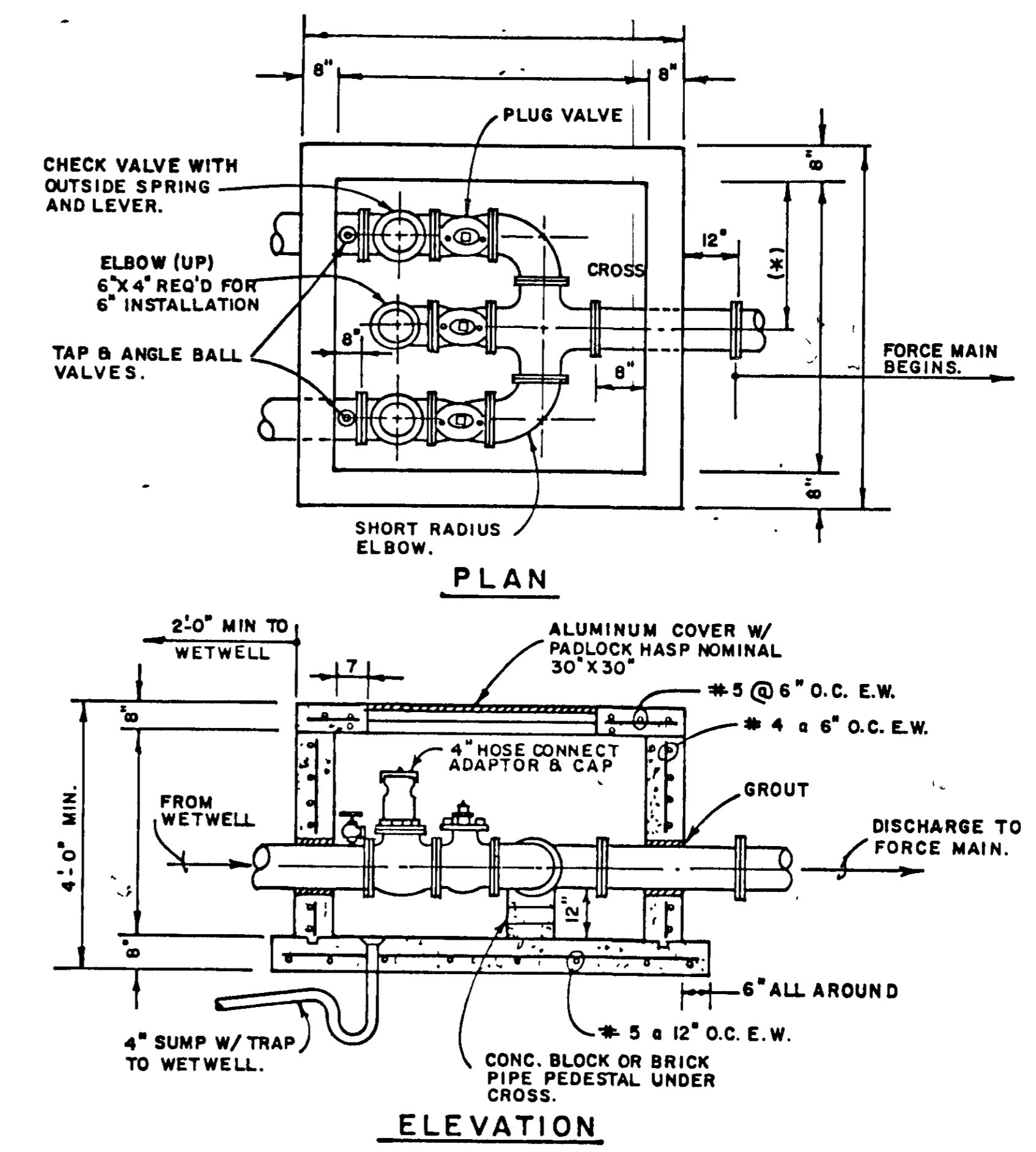
LEVEL SENSOR ELEVATIONS

ALARM	3.78
BOTH PUMPS ON	3.40
PUMP ONE ON	1.16
BOTH PUMPS OFF	-2.42

(TO BE FIELD ADJUSTED PER FLOW) FROM EXISTING LIFT STATION TO NEW LIFT STATION.



VIEW "A"

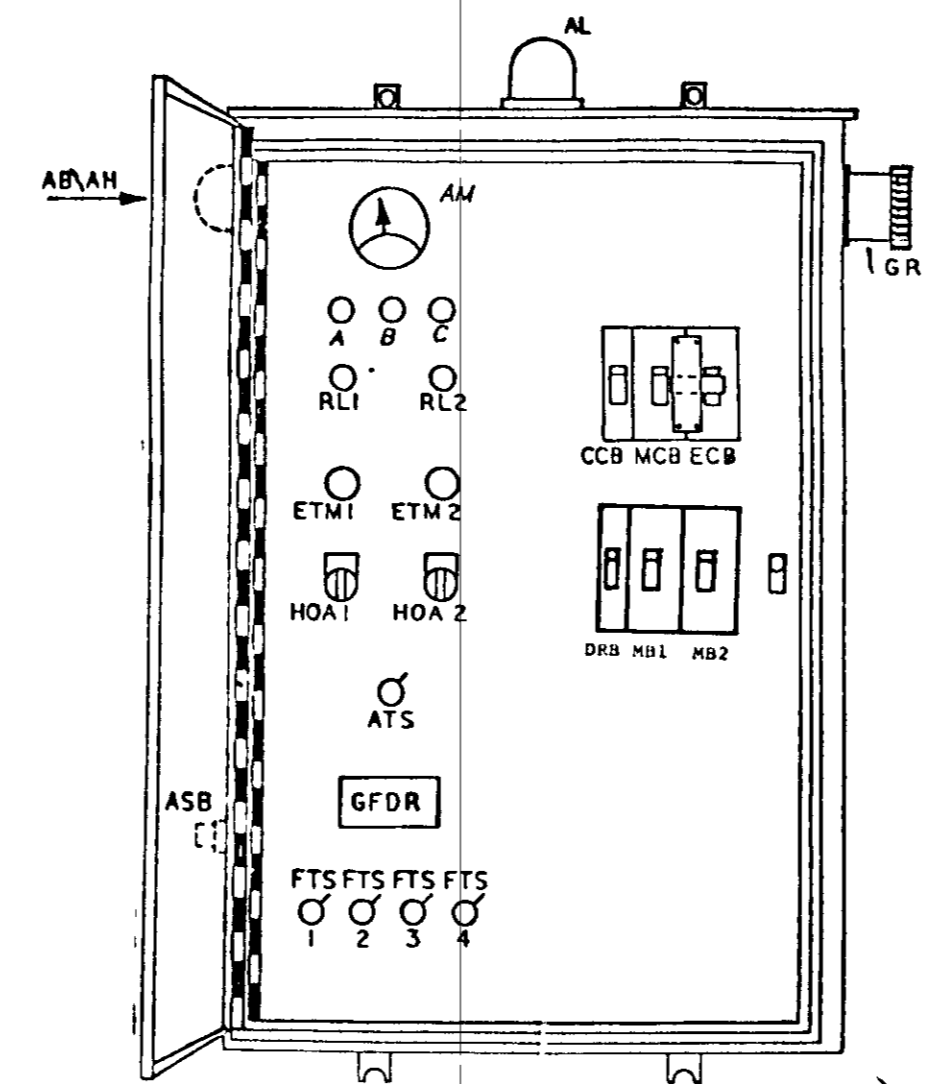


NOTES:
 1- ALL PIPES TO BE CEMENT LINED D.I.P. FLANGED.

VALVE VAULT DETAILS

NOTES:

1. ALL CONSTRUCTION TO BE PER CHARLOTTE COUNTY TECHNICAL SPECIFICATIONS.
2. SHOP DRAWINGS OF ENTIRE INSTALLATION TO BE APPROVED BY THE CHARLOTTE COUNTY UTILITY DEPARTMENT PROJECT ENGINEER.
3. 3/4 INCH WATER LINE SHALL BE LOCATED WITHIN 2 L.F. OF WET WELL AND SHALL HAVE A REDUCED PRESSURE BACK FLOW DEVICE INSTALLED IN LINE



NOTES:
 1 NEMA 3R SS CAB, WITH ALUMINUM DEAD FRONT



COUNTY OF CHARLOTTE
 COUNTY ENGINEERING DEPARTMENT
 PUNTA GORDA, FLORIDA

**TIE-IN WITH CITY OF
PUNTA GORDA UTILITIES**

DETAILS

SCALE: _____
 DES BY: _____
 DRW BY: _____
 CHK BY: _____
 SURVEYED BY: _____
 APPROVED BY: _____
 DATE: _____

SHEET 4 OF 4
 DRAWING No. 803